



ESSEX YOUNG FARMERS Show

2026



FUNDRAISING
FOR ESSEX
YOUNG FARMERS

OFFICIAL SHOW SPONSOR



Hugh Pearl Land Drainage



With 70 years experience of contracting, we can supply all your drainage and trenching requirements from design to construction



Hugh Pearl
(Land Drainage) Ltd
01277 890274
admin@hughpearl.co.uk



New Farm, Bobbingworth, Ongar, Essex CM5 0DJ

www.hughpearl.co.uk



INSIDE SHOW 2026

EDITOR'S WELCOME

Hi everyone!

Welcome to the 2026 Essex Young Farmers' Show! I'm Holly, the editor of our magazine!

Last year, we had a fabulous show with a great turnout and we hope that this year will be no different! Across the showground we have a huge range of activities - ranging from the equine ring (my favourite), horticultural area, rural crafts, steam engines and the brilliant attractions in the main ring - there really is something for the whole family! There are plenty of options for food as well, including our very own EYFC tea rooms, as well as a great array of vendors and food trucks.



Inside this programme, you will find out about the events happening today as well as a map of where you will find the different areas. Additionally, our ten clubs and executive committee have written a summary about what they have been up to this year. If you see any of our members about the showground, please feel free to grab them for a chat - we are always happy to talk about Young Farmers and how you can sign up and get involved!

Hope you enjoy the show and the weather stays summery!

Holly Pilcher
Magazine editor for EYFC

ESSEX YOUNG FARMERS

✉ office@essexyfc.co.uk

☎ 01245 360442

🌐 www.essexyoungfarmers.com

Whitbread's Barn, Chatham Green, Chelmsford, Essex, CM33LQ

Published by: Duplexity Artwork | www.duplexity.co.uk

05	County Chair
06	County President
09	Tradestands
10	Hugh Pearl (Land Drainage) Ltd
15	Traction Engines
17	Festival of Food
19	Tea Rooms
21	Livestock
22	Rural Crafts
23	Main Ring & Attractions
24	Show Bar
25	Game Fair
27	Horticulture
28	Equine Ring
29	Lawn Mower Racing
31	Tug of War
33	Vintage Tractors
37	Sponsorship
39	Timetables
40	Site Map
43	Subscribers
45	Farming Through the Year
47	Forestry
49	Children's Education Area
50	Prelims
52	Show Mum
53	Exhibition Hall
54	Five Minutes With...
57	Activities
59	Social Media
61	Competitions
63	Recycling Campaign
65	Fundraising
66	Ashdon & Saffron Walden YFC
67	Brentwood YFC
68	Chelmsford YFC
69	Colchester YFC
70	Dunmow YFC
71	Halstead YFC
72	Maldon YFC
73	Ongar YFC
75	Southminster YFC
77	Wix YFC
78	Chaplain's Chapter

Barbour

JOULES
EST. 1989



Schöffel

HÄRKILÄ

AIGLE
DEPUIS 1853

Rydale

Ridgeline
of New Zealand

COUNTRY STYLE

AT ERNEST DOE



 **ernestDOE**

ULTING (HEAD OFFICE), MALDON, CM9 6QH | 01245 380311
OTHER ESSEX BRANCHES IN COLCHESTER, FYFIELD & ROCHFORD
CHECK OUT OUR NEW ONLINE STORE: shop.ernestdoe.com



COUNTY CHAIR

EMILY DAVIS



What could you get out of joining Essex Young Farmers?

It's SO much more than mud and wellies!

We welcome everyone from the ages of 16-28 years, whether you are a keen tractor enthusiast or don't own a pair of wellies! Essex Young Farmers is all about creating a welcoming community where everyone can have fun, learn new skills and make friends along the way - and of course getting involved in our incredible annual country show!

- » **Make lifelong friends:** Essex Young Farmers prides itself in attracting people from all walks of life, with a common interest in the countryside and an enthusiasm to try new things.
- » **Get involved with Show:** The build up to the show guarantees you make new friends, learn new skills - it is hard work but also a bucket load of fun!
- » **Events & Competitions:** A packed calendar of competitions, countryside events, social nights, and trips. Clubs compete in a wide range of competitions from lawn mower racing, to public speaking to raft racing.
- » **Charity Fundraising:** Members regularly get involved in charity work and helping with

community projects. Each of the 10 clubs all support a charity and raise money throughout the year through innovative campaigns. As a county we also support a charity, this year being YANA and Cambridge Children's Hospital.

- » **Training & Development:** Essex Young Farmers invests in their members and funds qualifications, training and courses that will enhance member's skills.

There are so many more benefits of joining Young Farmers that I could list and I can honestly say getting involved in Essex Young Farmers was the best thing I ever did!

So if you, someone you know or your children are looking for fun, friendship and a chance to try new skills and opportunities then this is for you! Head over to the 'What is YFC' marquee on the show ground to find out more information. We look forward to seeing you at our next event!

Hope you enjoy the show!

Emily Davis
County Chairman 2025-2026



COUNTY PRESIDENT

RICHARD POHL

As President of the Essex Young Farmers Federation I am incredibly proud to write this report in anticipation of what I am sure will be another outstanding year for our County Show and the tremendous effort that goes into making it such a success.

Our show does not happen by chance. It is the result of countless hours of hard work, planning and dedication from our members. From early morning set-ups to late nights behind the scenes, our young farmers give up their time alongside running their own farms, businesses, studies and full-time jobs taking holiday or unpaid leave to make this day

“The level of commitment shown year after year is remarkable. Every competition organised, every ring steward in place, every parking space managed and every stand coordinated is delivered by volunteers who are passionate about agriculture and proud of our federation”

possible. The level of commitment shown year after year is remarkable. Every competition organised, every ring steward in place, every parking space managed and every stand coordinated is delivered by volunteers who are passionate about agriculture and proud of our federation.

It is important to recognise that all of our members are volunteers. They step forward not for reward, but because they believe in supporting our rural community, developing their own skills and ensuring that the next generation of farming remains strong. The show is a showcase not only of agriculture, but of teamwork, leadership and resilience.

I would also like to extend my sincere thanks to all

of our subscribers for their continued and valued support of the federation. Your backing enables us to provide opportunities for young people across the county and to continue delivering events on the scale that we do. Equally we are extremely grateful to our trade stand holders whose ongoing support plays a vital role in the success and financial viability of the show. Your commitment to working alongside us is hugely appreciated.

While we celebrate the success of the show we must also acknowledge the growing challenges facing the agricultural industry. Farmers are under increasing financial pressure with rising input

costs, market volatility and tighter margins placing real strain on family businesses. Recent changes to inheritance tax policy introduced by our current government and the increase in the cost of fuel due to the war in the Middle East have added further uncertainty for many farming families who are striving to secure their businesses for the next generation. At the same time British farmers are facing mounting pressure to compete

against cheaper imported food, often produced to different standards which make maintaining profitability even more difficult. Please when you are next in the supermarket buy British and support our wonderful farmers.

Despite these challenges the resilience and determination of our young farmers remain stronger than ever. The success of this year's show demonstrates the strength of our community, the dedication of our members and the continued importance of supporting British agriculture.

On behalf of Essex Young Farmers thank you to everyone who has contributed through time, sponsorship, trade support or attendance to



making this year's show such a tremendous achievement. Together we continue to build a federation we can all be proud of and a future for farming that remains bright.

If you, or anyone you know, are interested in getting involved as a Young Farmer we would be delighted to welcome you at our stand during the show. Membership is open to anyone aged between 16 and 28 and you certainly don't need to come from a farming background to join. I'm a great example of that myself. I joined the federation at seventeen with no connection to farming and it has been one of the best decisions I have ever made.

Since joining many years ago, I have gained so much more than I ever expected. I have made lifelong friends and developed valuable life skills such as public speaking and confidence that I still rely on every day. I also was given the opportunity to take part in a wide range of activities, from sporting competitions, skills events to of course unforgettable parties. Being part of Young Farmers offers a unique mix of personal development and genuine fun, all within a supportive and welcoming community. Please use the QR code below to sign up as a YFC member.

We would also love to reconnect with any former

Young Farmer who may not be subscribed to the federation. If that's you, please consider signing up using the QR code below. As a subscriber you will enjoy a number of benefits including our quarterly magazine, entry to the show, and invitations to exclusive subscriber events throughout the year.

At present we have around 700 subscribers. While this is a strong number it doesn't fully reflect the many members who have been part of the federation over the years. By joining as a subscriber you will be helping support the continued success of the organisation, ensuring that current and future members can enjoy the same opportunities, experiences, and friendships that made your time in Young Farmers so special.

I look forward to seeing you all at the YFC members stand, subscribers' marquee or around the showground.

We hope that you all enjoy this year's show.

Best wishes to you all.

Richard Pohl
President
Essex Young Farmers Federation





BRIGGS&STONE

Land & Property Consultants

Valuation | Expert Witness & Arbitration | Agency
Planning & Diversification | Professional Services
Energy & Sustainability | Infrastructure &
Compulsory Purchase | Development | Poultry



Edward Briggs | Lucie Stone
Will Taylor | Coral Little | Josh Keyte

briggsandstone.co.uk | 01494 211000
info@briggsandstone.co.uk



TRADESTANDS

JADE GEMMILL

Hello all, welcome to Essex Young Farmers Show 2026!

My name is Jade Gemmill, I am a Maldon Young Farmers member, and my role for the past 8 months has been to organise the 2026 showground and the tradestands that are exhibiting here with us today.

We have welcomed well over 100 tradestands this year, guaranteeing something to suit everyone. If you are searching for a particular business, or are unsure of your whereabouts on the showground, check out our map in this magazine to guide your way around.

I would like to say a great big thank you to Hugh Pearl Land Drainage for their help in GPS mapping the showground for this year, and supporting us as Main Sponsor for Essex Young Farmers Show 2026. Be sure to check out their stand by the Main Ring!

I hope you all enjoy your day with us at our 2026 show.

Jade



PEARL

Engineering the Ground Beneath Us: The Story of Hugh Pearl (Land Drainage) Ltd



In the world of construction, agriculture, and leisure, success is often judged by what we see above ground - lush crops, pristine fairways, and high-performance sports pitches. Yet, the real foundation of these achievements lies beneath the surface. Hugh Pearl (Land Drainage) Ltd has built its reputation on mastering this hidden layer, delivering specialist services that ensure land performs at its very best.

With decades of experience, the company has become a trusted name across the UK, offering tailored solutions in agricultural land drainage, golf course drainage, sports field construction and maintenance, and minor civil works. Its expertise lies not just in understanding the ground, but in transforming it to meet the demands of modern use.

Agriculture remains at the heart of the company's work. Effective land drainage is essential for productive farming, allowing soil to maintain the right balance of moisture and aeration. Poor drainage can lead to waterlogging, reduced crop yields, and long-term soil degradation. Hugh Pearl (Land Drainage) Ltd works closely with farmers and landowners to design and install

drainage systems that improve soil health, extend growing seasons, and maximise productivity. The result is land that works harder and more reliably year after year.

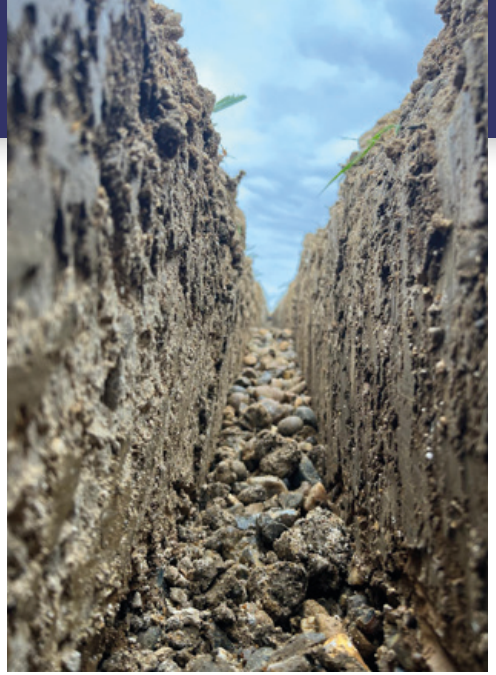
The same principles apply in the world of golf course management, where playability and presentation are paramount. A well-drained course not only looks better but performs consistently in all weather conditions. The company has extensive experience in golf course drainage, helping clubs maintain firm, fast-playing surfaces while protecting the integrity of fairways and greens. By addressing underlying water issues, Hugh Pearl (Land Drainage) Ltd ensures that courses remain open, playable, and visually outstanding throughout the seasons.

Sports field construction and maintenance is another key area of expertise. From grassroots pitches to professional facilities, performance surfaces depend on precise ground engineering. The company delivers end-to-end solutions, including pitch construction, drainage installation, and ongoing maintenance. These services ensure that surfaces remain safe, durable, and capable of withstanding intensive use, even in challenging weather conditions.

Complementing these specialist services is the company's capability in minor civil works. Whether supporting infrastructure projects or delivering site-specific ground improvements, Hugh Pearl (Land Drainage) Ltd brings the same level of technical skill and attention to detail. From small-scale groundwork to essential drainage infrastructure, these projects play a crucial role in enabling wider development.

What sets the company apart is its commitment to combining practical experience with innovative techniques. No two sites are the same, and each project requires a bespoke approach. By applying modern methods alongside time-tested principles, Hugh Pearl (Land Drainage) Ltd consistently delivers effective, long-lasting solutions.

Environmental responsibility is also central to its work. Thoughtful drainage design not only improves land usability but also helps manage water sustainably, reducing the risk of flooding and protecting surrounding ecosystems. This balance



between performance and environmental care is increasingly vital in today's landscape.

Ultimately, Hugh Pearl (Land Drainage) Ltd operates in a space that is rarely seen but always felt. Its work supports agriculture, enhances leisure environments, and underpins essential infrastructure. As demands on land continue to grow, the company's role in shaping and sustaining it becomes ever more important.

It is a reminder that the success of what lies above ground will always depend on the expertise applied below it.



core construction



- **Local Groundworks** and **Civil Engineering** Contractor
- Specialists in **Storm Water Management**
- **Design and Installation** of chemical wash down bays to comply with **Groundwater protection: Principles and Practice (GP3)**
- **Concrete Hardstandings** and **Steel Frame Building** design and installation



Tel: 01277 287430

Email: web@coreconstructionsolution.com

The Barn, Maldon Road, Margaretting, Essex CM4 9JS

**Temporary
Flooring &
Ground
Protection**



**Access
Roadway
for HGV's**



All Weather Access

- Heavy Duty Trackway Hire
- Installation Service
- Site Survey
- Operating Nationwide

01371 700 510

all-weatheraccess.co.uk

**ALL WEATHER
ACCESS**

AVANT[®]

South East Ltd

HIRE, SALES AND MAINTENANCE

We are the main dealer for Avant for Essex and Hertfordshire based in Great Canfield. Visit us for a Demo and Drive?
Griffin Farm, Great Canfield, Essex CM6 1JZ
T: 01279 879199
E: info@avantsoutheasthire.co.uk

**SUNDAY 4TH
MAY 2016**



**WITH OVER 200
ATTACHMENTS !**



COULD YOUR FARM ACCESS GRANT FUNDING?

Visit us at Block D at the Essex Young Farmers Show.

We'll be on hand to talk about Essex & Suffolk Water Environmental Grant Funding, which supports farmers to make practical improvements that help reduce run-off and improve water quality in drinking water catchments.

This funding can help support changes that benefit both your land and your farm business. We're here to support you with advice, funding opportunities, and practical solutions.



Scan the QR code to check eligibility or just drop by to speak with the team.

We're also providing free water refills, so bring your bottle, stay hydrated and have a chat. We'd love to see you.



TRACTION ENGINES

CHARLOTTE FREEMAN

KINDLY SPONSORED BY:



Hello, and welcome to this year's show! I've been involved with Young Farmers for several years now, and it's a real privilege to be part of such a fantastic tradition. Having grown up around steam engines, I've always had a passion for seeing them in action and sharing that enthusiasm with others.

This year's display brings together an impressive range of engines. Many date back over a century, offering a glimpse into the craftsmanship and innovation of the past. Whether you're a long-time enthusiast or seeing these engines for the first time, there's something here for everyone to enjoy. Our exhibitors are always happy to

chat and answer any questions you may have.

Working Demonstration...

In this section, you'll be able to see these incredible machines doing what they were built for. Throughout the day, we'll be running live demonstrations to show how they operate, giving you a real sense of the power and mechanics involved. It's a great opportunity to experience history in motion and appreciate the skill required to keep these engines running.

I would like to thank Avant South East for their sponsorship once again of the Traction Engine area, it is very much appreciated.

We hope you enjoy the display and take the time to explore, learn, and soak up the atmosphere. Have a fantastic day at our show!

Charlotte



AT THE SHOW THIS YEAR

NAME	MAKE	WORKS NO.	YEAR
Simon Bosworth	Burrell		2014
William Childs	Aveling & Barford	A.C 621	1937
John Dalton	Burrell		2022
Barry Freeman	Burrell	3923	1922
Bernard Green	Stanley Steam Car	23612	1923
Alfie Markham	Burrell	2386	1901
Glen Prince	Garett	33829	1920
M Retman	Foden	7926	1918





BECKERINGS
PARK

Set in the rolling countryside of Bedfordshire, Beckerings Park offers a truly traditional and exhilarating sporting experience. With a heritage of over a century, the estate is renowned for its well-organised, high-quality days in the field.

Today, guests enjoy superb partridge and pheasant shooting, as well as Chinese water deer stalking, all set within the estate's beautifully managed and varied landscape. Combined with exceptional hospitality and attention to detail, Beckerings Park delivers memorable sporting days that have been enjoyed by generations of sportsmen.

For more information please email sporting@beckerings.com
or visit www.beckerings.com

Sowing the seeds for your success

Discover an approach to law that's more progressive,
more proactive and more pragmatic.

We'll help your agricultural business to reach the next level.

Further information



Annabelle Rout
Partner
+44 1245 211215
annabelle-rout@birketts.co.uk

birketts.co.uk

Bristol | Cambridge | Chelmsford | Ipswich
London | Norwich | Sevenoaks

birketts





FESTIVAL OF FOOD

TILLY WORSICK

KINDLY SPONSORED BY:



EXHIBITORS

- » 1942 Street Food
- » Auntie Ree's Cookies
- » Belbin Native Seafood
- » Brockelby's Pies
- » Brown Bread Artisan
- » Candy Carnival Fudge
- » English Spirit Distillery
- » Essex Bakery
- » Fairfield Farm Crisps
- » Field of Cheese
- » Fine Food Land
- » Hilton Macarons
- » Hol's Bakes
- » Lilly's Kitchen
- » Meadow Oak Distillery
- » Mr and Mrs Olive
- » Procter's Sausages
- » Saffron Ice Cream
- » Scoff Your Face
- » Sussex Biltong
- » Sweets Dee's
- » The Cheese and Pie Man
- » The English Wine Tasting Company
- » The Immaculate Collection
- » The Podgy Pieman
- » Thoroughbred Wines
- » Totham Bangers
- » Twisted Treats
- » Wilkin and Sons
- » Yum Yum Tree Fudge



The festival of food is full with delicious food on offer, welcoming back favourites and some new stalls this year.

To satisfy your tastebuds, we have sweet and savoury delicacies on offer. If you love savoury food, be sure to explore our variety of cheese, samosas, seafood, pies and more. If you prefer a sweet treat, keep an eye out for ice cream, brownies, cookies, freshly baked goods and much more.

We will also have a selection of alcoholic drinks to take away, from wine to spirits. We're close to the entrance and right next to the bar, so be sure to visit on your way in or out to see what we have in store.

See you soon,

Tilly x

Reduced storage and handling charges, enhanced flexibility with fair and transparent storage

Camgrain has undergone a major transformation, driven by a focus on cutting costs and modernising long-standing practices. After recognising it had become “too expensive, relying on the committed tonnage model,” the business took decisive action. As Chief Operating Officer, Steve Atherton, explains “the catalyst for change was tackling our cost base.”

By June 2025, £1.9 million had been removed from costs, with a further £1.7 million in savings on track. Despite inflationary pressures, this has reduced storage and handling charges to £9.90 per tonne—“55p lower than it was three years ago,” says Mr Atherton. A shift to distance-based haulage pricing has also created a more “equitable” system, removing the “doughnut effect” that deterred nearby farmers. The changes

have already secured over 8,000 tonnes of additional storage.

Camgrain remains a strong alternative to on-farm storage. At £46 per tonne, it avoids capital costs and operational challenges, while pooling grain unlocks access to premium markets. “About a third of the 260,000 tonnes in our pools is Group 1 milling, with customers valuing the consistent, high-quality supply” says Group CEO, Simon Willis.

Group 1 premiums have ranged from £57 to £70 in recent years, supported by protein bonuses and blending that helps maximise value.

Innovation is also playing a key role. A BoMill InSight Protein Sorter—currently being installed and the first of its kind in the UK—will analyse and sort individual

kernels by protein content. “We could extract a Group 1 spec from a low protein bulk,” says Operations Director, Dan Parrott, creating new value opportunities. With capacity of 15 tonnes per hour, it is expected to be ready for Harvest 2026, with any additional premiums feeding back into the base price for all members.



SUPPORTING FARMING FAMILIES FOR GENERATIONS

Trusted legal advice for rural communities across Essex,
for over 260 years.

County House, 100 New London Road
Chelmsford, Essex, CM2 0RG
01245 847636 | [ellisons.com](https://www.ellisons.com)



TEA ROOMS

LUCY PEPPER & HOLLY PILCHER

KINDLY SPONSORED BY:



Hello and welcome to the Essex Young Farmers' tea room!

The tea room is the perfect place to visit if you fancy a bite to eat and a quiet place to sit down away from the buzz of the show! We serve a fantastic selection of sandwiches, cakes, biscuits and drinks - which are all made by our lovely members! Whether you fancy a light bite to takeaway or somewhere to sit down for lunch - please do come and visit us.

Last year, we took on the challenge of adding a Young Farmers' coffee shack to the show ground and it was a huge success! So this year, with the addition of a few more coffee machines - it will be back and bigger than ever. So, if you fancy a coffee



to go or a sausage roll and a cake - please come and find us near the main gates!

Throughout the day we will have a team of Young Farmers in both the tea room and coffee shack to not only serve the cake, but also to answer any questions about EYFC you may have. We all love a chat so please do come and introduce yourself and say hello!

Lastly, we hope you have a wonderful day here with us at the Essex Young Farmers' Show.

Lucy and Holly



PLANNING PERMISSION EXPERTS FOR FARMERS

Over 100 Farmers Switched to Us Last Year. Ask Them Why!

- ✓ Submitted in 28 days. Not 28 weeks
- ✓ 95% success rate
- ✓ We handle planning. You handle the farm.



- 🎧 Listen to the Farmers Planning Podcast
- 📺 Watch our planning videos
- 📄 Download our permitted development guidelines



www.foxesrural.co.uk



LIVESTOCK AREA

HENRY EVA & DEVON MATTHEWS

KINDLY SPONSORED BY:

Di's Supplies



STANFORDS

ESTABLISHED 1879

We are delighted to welcome livestock farmers and their prized animals back to the showground for what promises to be a fantastic celebration of rural life.

The livestock area offers plenty to see and enjoy throughout the day. We are pleased to welcome back Barleylands Farm, bringing with them their ever-popular children's farm, where visitors can get up close to a variety of animals including pigs, goats, rabbits and more. Alongside this, our sheep and cattle classes will showcase an impressive range of breeds, offering something of interest for everyone.

We are also proud to host the Young Handlers Class once again this year. This much-loved



event provides a wonderful opportunity for the next generation of stockmen and

women to demonstrate their skill, confidence and dedication to livestock handling.



Our sincere thanks go to our expert judges, Robert Clarke (Cattle) and Edward Lovejoy (Sheep), for joining us today, as well as to our commentator, Mark Cleverdon. Watching the judging process is a fascinating experience, and many judges will share insights into their decisions—making it well worth a visit to discover what truly defines a champion show animal.

We hope you all have a fantastic day at the Show and look forward to seeing you around the livestock area.

Henry and Devon



RURAL CRAFTS

ISLA WENDELKEN

EXHIBITORS

- » Amber Affair
- » Beachcomber Crafts
- » C L Silver & The Rural Bird
- » Classy Art & Craft
- » Clocks in the Woodshed
- » Countryside Resin
- » Cowhides of Brazil Ltd
- » Crafty Mare
- » Daisy M Ceramics
- » Essex Woodcarvers
- » Glass on Glass
- » Juniper Hill Silver Ltd
- » Little Sign Studio
- » Lybo Coasters
- » Massagical
- » Meadow Cottage Crafts
- » Metalistmatt Metal Creations
- » Print My Studios
- » Pulse Magnetics
- » RT Creations
- » Suffolk Gifts
- » Tangled Vine Ltd
- » Wiccaknitta

Good day, and welcome to the Rural Crafts and Shopping Hall at the Essex Young Farmers' Show 2026!

I have been given the honour of organising the Rural Crafts and Shopping Hall for another year; this year will be my last as I will be too old to be a Young Farmer! Every year it's so warming to see so many familiar faces return and some new, with their wonderful handmade creations, I thank you all for all of your support over the years.



If you're looking for a special gift or a unique keepsake, be sure to come visit us! We have clothing, bags, jewellery, bespoke home accessories, ornaments and more. We pride ourselves in making sure there is something to suit everyone.

Today is a busy day for us Young Farmers as we are determined to put on the best show possible, however if you pass me be sure to stop and say hi or give me a wave.

If you have been inspired and would like to be a part of next year's Rural Crafts and Shopping Hall please do not hesitate to get in touch. We love discovering and showcasing new craft talent! Our email is show@essexyfc.co.uk

I hope you all have a fantastic day!

All the best,

Isla Wendelken



MAIN RING & ATTRACTIONS

RYAN COX

Hi, I am Ryan and I have been in Young Farmers as a Dunmow member for three years now. I am really excited to be given the opportunity to organise the main ring this year! I hope you enjoy the show!

The Main Ring promises an action-packed day where tradition meets adrenaline, featuring 'Extreme Bike Battle' - a breathtaking motocross stunt show with fearless riders performing high-flying tricks, alongside 'The Knights of Albion' - a thrilling jousting spectacular that brings historic battles to life.

Visitors can also enjoy a proud parade of **vintage tractors** celebrating farming heritage, experience the power of classic steam engines in action, and watch an exciting horse hunt demonstration showcasing skill and discipline...all leading up to the **grand machinery display sponsored by Pearl** - where special machinery and powerful equipment take centre stage - ensuring there's something for everyone to enjoy in the Main Ring.

Once again in true Young Farmers' fashion, the clubs will be battling it out in some fast pace (or slow pace for some) **lawn mower racing** and displaying strength and determination on the rope to see which club will take the crown in **tug of war**.

I hope you enjoy today's events!

Ryan



MAIN RING TIMETABLE

09:45-10:15 Puckeridge and The Essex Hunts display

10:15-11:00 Vintage Tractors and Steam display

11:00-11:45 Knights of Albion jousting display

11:45-12:30 Farming Through the Year display

12:30-13:15 Extreme Bike Battle display

13:15-13:30 Essex Agricultural Society Long Service Award

13:30-14:15 Knights of Albion jousting display

14:15-15:00 Hugh Pearl (Land Drainage) Ltd display

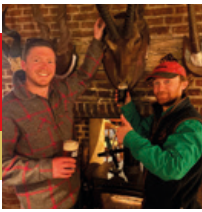
15:00-15:45 Extreme Bike Battle display

15:45-16:00 Tradestand Awards

16:00-16:30 Lawn Mower Racing

16:30-17:00 Tug of War





SHOW BAR

ARCHIE MEADOWS & WILL SAUNDERS

KINDLY SPONSORED BY:



Welcome, one and all to our 2026 bar for what is undoubtedly the best selection of thirst quenchers at the Essex Young Farmers' Show yet.

Archie and William are very experienced being in front of a bar and now we are behind one, we want to give you all the best experience!

We have the full draught line which HAWKSTONE has to offer as well as their lager, cider, fruit cider, IPA and stout - which will be the first time in Essex that you can experience such a lineup! Additionally, we will be serving everyone's favourite - Pimm's, as well as a variety of wines, prosecco, soft drinks and 0% options. For many this will be a first-time opportunity to experience such a line up!



Next to our bar, you will see Nuclear Races! They have kindly sponsored the bar and put on this attraction for you - perhaps Dutch courage is needed for the challenge?

We both hope you have a wonderful time at our show this year! A special congrats goes to William Honeywood, this year's chair, Halstead member and a close friend of ours - he has done a fantastic job leading the show this year!

That's all from us - come and find us in the bar tent!

Cheers!

Archie and Will

ELLISONS' BAR

If you find yourself needing a refreshing drink but you're at the other end of our showground, do not worry, our other bar has you covered! Kindly sponsored by Ellisons this year, we offer the same fabulous drinks as our main bar, still with the great Hawkstone products on offer (as well as soft, 0% and others).

We hope this area keeps you hydrated, it's a great spot to grab a drink while you eat your lunch as it is close to the many wonderful catering outlets we have on offer. Harry Pilcher has kindly offered to run the bar (and be chief taste tester for this area) to keep it running smoothly.

Thank you again to Ellisons for the sponsorship and we hope you enjoy the drinks!





GAME FAIR

NICK BUNDY & TOBY TWINN

KINDLY SPONSORED BY:



This year in the game fair area we will be bringing you the quintessential countryside activities. From working dogs to birds of prey - the ring will be packed with it all.

Dotted around the ring we will also have some of the acts as well as many other interesting and interactive stands.

We are happy to be welcoming back Barleylands with their magnificent birds of prey display team. You won't want to miss this exciting and educational display of all their birds. You will also be able to see them displayed in the livestock area when they are not soaring through the game ring skies.

Misselchalke Gun Dogs are another crowd pleaser that is going to return to the ring. It is amazing what you are able to get out of dogs and this display shows you just that if you put the training in.

Essex Fly Fishers club will demonstrate the skilful art of fly fishing. They will showcase casting techniques, fly selection,



and line control, sending loops of line gracefully through the air.

The Dog and Duck show will also bring a crowd as the dogs seamlessly usher the ducks into the pen.

Puckeridge and The Essex Hunts will be doing a parade around the ring and there will be a talk on its history. If you are lucky, you may also get a chance to join them in the ring. They will also be set up around the ring so if you miss them, you can always go and see them at their stand.

We have given you the opportunity to witness some amazing displays while learning more about the countryside around you. We are looking forward to seeing you ring side and joining us as we watch the displays. Please come and say hello. We all hope you have an amazing time at the Essex Young Farmers' show.

Toby and Nick



GAME RING TIMETABLE

10.00-10.20:

Essex Fly Fishers

10.25 - 10.55:

Barleylands Birds of Prey

11.00 - 11.30:

Puckeridge and
The Essex Hunts display

11.35 - 11.55:

Chris Meacham ferrets

12.00 - 12.30:

Misselchalke Gun Dog display

12.35 - 13.05:

Dog and Duck show

13.10 - 13.30:

Essex Fly Fishers

13.30 - 14.00:

BREAK

14.00 - 14.30:

Barleylands Birds of Prey

14.35 - 14.55:

Chris Meacham Ferrets

15.00 - 15.30:

Misselchalke Gun Dog display

15.35 - 16.05:

Dog and Duck show

**Planning can be complex.
Our experts make it simple.**



We guide you from first ideas to planning approval across a wide range of developments large and small.

**Whirledge
& Nott**

01268 783377 www.whirledgeandnott.co.uk

Land • Property • Development

HORTICULTURE

AMELIA PLATT



We're almost getting to summer with longer days and finer weather - there's no better time than now to get out into your garden!

At the Essex Young Farmers' Show this year you will find several lovely stands where you can choose new plants or decorative items for your garden. Our exhibitors this year are:-

“At the Essex Young Farmers' Show this year you will find several lovely stands where you can choose new plants or decorative items for your garden”

Dunmow Emporium - an independent, family run business who pride themselves on providing excellent customer service selling a range of plants, furniture and garden ornaments.

Merton Hall Shrubs and Plants - a wonderful display of plants, shrubs and small trees from a family run garden centre who are keen to offer helpful advice.

Pixies Plants - lovely plants and shrubs from a local Essex nursery.

Wild Things Woodcraft - local Essex company supplying wood carvings and metalwork for home and garden.

I hope that the sun shines on us on Show day and that you all have a brilliant day at the Essex Young Farmers Show and enjoy the Horticulture Area.

Amelia



EQUINE RING

LUCY STAMMERS & FREYA SAMUEL-SMITH

Welcome to The Essex Young Farmer Show 2026 and to the Equine Ring!

We have a busy schedule of acts for you to watch, so grab an ice cream or a drink from the bar, and take a seat on one of the straw bales around the ring for the best view and to avoid missing any of the action!

So, what can you expect from our acts today?

We are delighted to start the day with a display from UKPA (United Kingdom Polocrosse Association) who will be putting in a lot of tight turns and seamlessly picking up the ball off the ground to score as many goals as possible. Speaking of tight turns, be ready to hold your breath as our Carriage Driving Trials Demo Team race through cones to obtain the quickest time without knocking any obstacles over.

The Pony Club are returning this year to take part in mounted games, with popular races



including bending, mug and the 5 flag race. Which team will win - East Essex or Essex Farmers Pony Club? Pick your team and cheer them on!

Around lunchtime you'll be able to watch The Henny Heavy Horses Demo Team with their Shire horses. This is a great opportunity to learn about this beautiful breed and their importance in farming through the years.

A new act that we are thrilled to have in our ring this year is Retraining of Racehorses (ROR). You will have seen thoroughbreds racing at local point to points or at racecourses, but you may not know what they get up to after they retire from racing. ROR help retired racehorses to find new disciplines to enjoy and loving homes. They will be showcasing some thoroughbreds who have been retrained for different disciplines and tell you more about the charity.

You can catch Puckeridge and The Essex Hunts in this ring later in the day. Meet the hounds, learn some of their names, and hear more about the history of the hunt.

From Shire horses to Shetlands, our line up today wouldn't be complete without JPL Shetland Racing, who are always a real crowd pleaser! Place your bets on which

EQUINE RING TIMETABLE

10:00-10:45:

UKPA (United Kingdom Polocrosse Association)

10:50-11:25:

Pony Club Mounted Games

11:30-11:55:

Retraining of Racehorses (ROR)

12:00-12:45:

JPL Shetland Racing

12:50-1:20:

Henny Heavy Horses Demo team

1:30-2:00:

Carriage Driving Trials Demo

2:05-2:35:

Pony Club Mounted Games

2:40-3:10:

Puckeridge and The Essex Hunts display

3:15-4:00:

JPL Shetland Racing

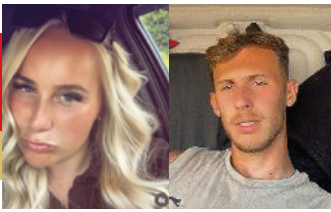
Throughout the day – live farriery demonstrations with Jack Johns Farriery on the corner of the equine ring

Shetland and jockey you think will be crowned champion as they go head-to-head around a course of jumps!

Don't miss the farrier demonstrations going on throughout the day, you will find Jack Johns Farriery on the corner of the equine ring.

Thank you for supporting our show and have a wonderful day!

Lucy & Freya



LAWN MOWER RACING

NIEVE BAKER & JACK TUCKER

Well, another year has flown by and once again it's time for the Essex Young Farmers' Show! Members have had another year of full prep ready for lawn mower racing!

Lawn mower racing continues to be a highlight of the show and follows similar regulations to those set out by the British Mower Racing Association. All machines are carefully modified with cutting decks removed, safety features added, and engines checked to ensure they meet the required standards. Each mower is built and maintained by club members, which is why you'll see such a variety of creative and competitive designs on the day.

Safety remains a top priority. Guards are fitted, kill switches are checked, and all machines are inspected before racing begins. While it's a fun and



entertaining event, it can also be unpredictable, so we work hard to minimise risks and keep both competitors and spectators safe.

Earlier in the year, we held our preliminary race day, which gave

us a great opportunity to test both the mowers and the drivers and provided valuable insight into what needed improving. Since then, members have been busy making repairs and fine-tuning their mowers in preparation for the main event.

On Show Day, we'll be back in the main ring, ready to race head-to-head in what promises to be an exciting and competitive display. Whether you're taking part or cheering from the sidelines, lawn mower racing never fails to entertain.

Make sure you come along, support your club, and enjoy the action, this is one event you won't want to miss!

Neive & Jack




**HOWIE
KENT
&CO**


Your trusted partner for rural
commercial property lettings
and land agency services




- Commercial Property Lettings
- Commercial Rent Reviews
- Land Agency
- Renewable Energy Site Finding
& Project Development

HOWIE, KENT & CO

 01621 212651


 enquiries@howiekentandco.com

 howiekentandco.com



**Advancing
sustainable farming
with expert
agronomy and farm
business support**

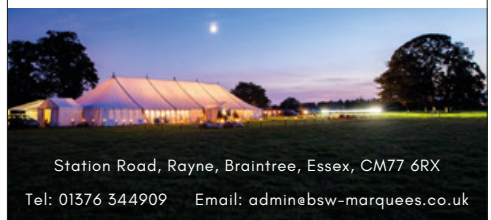
 info@agrii.co.uk

 01480 418333

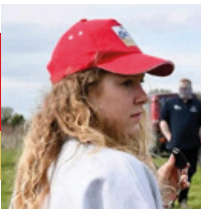
Agrii.




BSW MARQUEES LTD



Station Road, Rayne, Braintree, Essex, CM77 6RX
Tel: 01376 344909 Email: admin@bsw-marquees.co.uk



TUG OF WAR

TIFF BELL

KINDLY SPONSORED BY:



Hello and welcome to the Essex Young Farmers Show 2026.

I'm Tiff, a tug of war lover, ex puller and the judge again this year. Tug of war is one of the most competitive events in Young Farmers and just as exciting to watch as it is to take part in. The teams competing today have spent months training in all conditions to make sure they're in peak shape, all aiming for a spot at the top and qualification for Eastern Areas. To even reach the main ring today, they've already had to prove themselves by finishing in the top four at prelims. Back in February we had a TOW Warm Up Day. Despite the weather being truly miserable, the day saw a great turnout, with lots of members getting stuck in and enjoying themselves. This would have been the first chance for some clubs to do some live pulls and find their feet in the mud.



To qualify for show, TOW teams must place in the top 4 at Prelims in their category - ladies, mens and mixed. This year saw lots of teams competing in each category, so check out the Prelims report to see who qualified and will be competing in the big Tug of War competition at 4:30 in the main ring!

This year we have also added

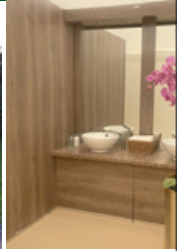
another weight category, a mixed 4x4, this means 4 boys and 4 girls can join together to test their strength against other mixed teams. Each team of eight pullers must all work hard together to win against the other team. With strict weight limits of 680kg for men's teams, 560kg for women's and 600kg for the Mixed 4x4, teams aim to be right on the limit without going over, having weighed in together on Friday evening. You'll probably see the pullers in some funky looking boots these are specialist boots with sharp edges that help to grip into the ground as they battle to gain every inch. A long-standing favourite, tug of war is always a highlight of the Essex Young Farmers' Show. Head to the main ring at 16:30 to catch the action and support your club.

That's all from me.

Tiff




mobile thrones
toilets for all occasions



Luxury Mobile Toilet Shower & Generator Hire

**Creating the best
impression for your guests**

Parties

Weddings

Exhibitions

Balls

Festivals

Concerts

Sporting Events

Functions

Tel: 01245 324901

info@mobilethrones.co.uk www.mobilethrones.co.uk
Salesfrith Farm, Bicknacre Road, East Hanningfield, Essex CM3 8AP

Old Park Meadow Natural Burial Ground



We offer burials and ash interments, funerals, services and wakes.
Adaptable to any ceremony and a completely personalised service.

A caring and compassionate experience through a difficult time.

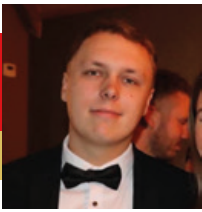
Reserving a plot in advance is also possible.



01245 806332

oldparkmeadow.co.uk

Coppice Lane, North End, Between Chelmsford & Great Dunmow, Essex, CM6 3PL



VINTAGE TRACTORS

GEORGE STINSON

KINDLY SPONSORED BY:



Firstly, hello and welcome to this year's show. I'm George, a Maldon member and this will be the second year that I am organising the vintage tractor area.

This year you will find on the vintage tractor display various tractors from 1920 to 1991 as well as 3 barn engines from 1922-1936. I would just like to say thank you to all the owners for bringing their machines along as I know how much effort goes into the upkeep of these machines.

The machines you see on the stand today have all helped develop what is now the modern tractor. They all have the same principles between them and the modern machines. You will also notice similarities between them too! Those now



considered vintage tractors were a revelation in the way the fields could be worked compared to their predecessors, the horse. They allow for longer working hours without a drop in productivity as well as being able to use bigger implements.

I hope you have enjoyed your visit to the Essex Young Farmers Show and hopefully see you next year.

**Regards,
George**

VINTAGE TRACTORS

NAME	TYPE	YEAR	SERIAL/ REG NO.	BRIEF DESCRIPTION & HISTORY
Chris Metson	Steam Contractors Living Van	1920		I bought the Living Van locally in 1993. It needed considerable restoration - I recently refurbished the front axle and turntable but there is still work to do. This is its second visit to Boyton Hall - my son Ian Metson (Show Chairman in 2012) used it as his accommodation!
Nick Smith		1929	10 - 20	A 1929 International 10-20 tractor that has spent all its working life in Suffolk, still in original condition.
Josh Sargent	Allis Chalmers B	1937	MTW826	Worked on a sugar beet farm in Maldon until bought as a wreck in 1990 by my dad Scott Sargent who fully restored it 2 years ago.
Nick Marshall	Allis-Chalmers Model B	1947	EV325	I have owned this Allis Chalmers Model B since October 2025. As far as I know it has always been in Essex. It was a non-runner when I bought it and I have been recommissioning it after the past few months.
Neil Wood	Fordson	1947	GAF 402	Model N
Josh Sargent	Field Marshall Series 2	1948	416XUH	Unknown history, bought from a collector as a non runner. Gradually going through it to make it good again.
Christopher Murrells	Ferguson TEA20	1949	746273	This tractor belonged to the late Mr Scott Padfield and spent all its working life at Soap House Farm which is farmed by the Gann family.
Neil Wood	Field Marshall	1949	YWG 601	Series 2 Marshall
AJ Giblin	Fordson Major E27N	1951	AFL950	The tractor was made 8/7/1951 at Ford's factory at Dagenham and fitted with the Perkins P6 engine on the assembly line. I have had the tractor since March 1991 when it came from an ex Brentwood Young Farmer.
Jimmy Waters	Ferguson TED20	1952	LRM180	I owned this tractor for the last 21 years. Built on the night shift of 8th May 1952. Originally worked in Cumberland for many years then moved south to Lincolnshire and Cambridge before ending up here in Essex, taken part in 3 national vintage tractor road runs.
Adrian Joyce	Fordson Major E1A	1953	ORT421	This tractor was restored approx 12 years ago. I purchased it in August 2024 as a non-runner. After some tinkering and a new battery the tractor was up and running for the Young Farmers' Show 2025. Dynamo refurbished in January 2026.
Neil Wood	Fordson Major	1954		
Neil Wood	David Brown	1955	UAF 124	Cropmaster 30D
Neil Wood	Cropmaster	1956	SAO 580	25D
Graham Lowden	Allis Chalmers	1957	19957	This tractor spent its working life in The Fens hoeing sugar beet etc.
Neil Wood	Massey Ferguson	1958	VDD 711	35
Jack Dare	Fordson Power Major	1959	862XWF	This 1959 Fordson Power Major spent its entire life in Norfolk until June 2024 when it was purchased and transported to its new home in Essex, where it got restored by Jack & Steve Dare in 2025.
Mark Riley	International B275	1959	706ART	Built in Bradford between 1958 & 1968, the B275 replaced the B250. It boasted 3 extra forward gears plus 1 extra reverse and an increase in power from 30 to 39HP.
Neil Wood	Fordson Dexta	1959	552 EHW	
Brian Gilbey	Fordson Dexta Vineyard	1962	364 XWB	Fordson Dexter 1962 vineyard model made at Dagenham, Essex. Worked on vineyards in Kent.
Stephen Bolton	Ford 5000 Super Major	1966	HBL 599D	Lovely tractor used around the farm ploughing, cultivating, pulling trailers and drilling in its time. Now used for grass cutting
Thomas Turner	Allis Chalmers ED40	1966	JVF 95D	This is a lovely true British example of a 1966 Allis Chalmers ED40. It originated in Norfolk during the late 60s and early 70s.
David Bolton	Roadless Ploughmaster 95	1967	LDG 841F	A popular tractor of its time. Used for cultivating, ploughing and other heavy jobs on the farm. Good allround tractor.
Eric Burling	Massey Ferguson 165	1967	AHJ856E	
Neil Wood	BMC	1968	THK 606E	

Peter Herrington	Ford 4000	1971	WFN668J	On log book from a fruit farm in Kent, owned by me for many years. 1948 Trailer made from second hand parts from WW2 in Peterborough, made by F.W. Wheatley Trailers then resold by Does in 1972 to farm in Hanningfield then I restored.
Christopher Murrells	Ford 4000	1973	KPU394N	This tractor was on a smallholding from new in Stondon Massey, Christopher bought it from south Woodham Ferrers
Callum Wyatt	Leyland 270	1974	KCD155N	This 1974 Leyland 270, originally supplied by Henry S. Tetts, was bought from an estate in Harrietsham, Kent in 2023 and registered KCD155N. It has a full set of front weights, a new wiring loom, and optional factory-spec lights. The Bruce tartan headliner honours its Scottish roots and holds personal significance. It will be used for shows, road runs and ploughing matches.
Ian Emery	Ford 1000	1975	LLG273N	2 Cylinder 25hp diesel manufactured for Ford Motor Company by SHIBAURA, built in Japan under licence for Ford Motor Company between 1973 and 1978. This 1975 low hours tractor spent much of its working life on the Cambridgeshire fens and was purchased from a sale in 2021. Owned by Ian Emery from Writtle.
Ian Giblin	County 1174	1978	GWL1565	Tractor was used on the Lord Mountbatten estate in Hampshire for forestry work until 2013 and then sold to a collector in Loughborough and then to myself in 2022. 6.6 litre 113hp on Ford 8700 engine & 7600 rear end.
Terence John Stinson	Ford 3000	1978	GJN 421N	The tractor was bought from a local farmer in Tolshunt Darcy in 1993 and restored to present condition by myself. It is mainly used for ploughing matches and charity road runs. The plough was bought new at Writtle College in 1985 from Does.
Charlie Markham	Ford 8200 4WD	1982	DTL31X	The Ford 8200 had a significantly short production run of only two years. Launched at the Smithfield show in 1980, the tractor was 'designed' and manufactured by County Commercial Cars at their factory in Fleet, Hampshire for Ford using mainly Ford components. The tractor took the place of the Ford 8100, also made by County. The purpose for the tractor was to fill a horsepower void in the line-up between the 95hp 4 cylinder 7700 and the 135hp 6 cylinder turbocharged Ford TW-10, as well as providing a 4WD option.
Chris Metson	MB Trac 1000	1984	B624LRT	I was excited by the MB Trac shown at the Smithfield Show in the mid-70's, had experience of them through my farming career and bought this model in 2009 from Suffolk. Still used on the farm and charity events.
Ben Edwards	Ford 7710	1986	Q486BCY	Ford 7710 1986 has had light restoration over the last few years.
James Bardwell	Case International 1056 XL	1989	F790ODF	6 cylinder diesel 8000 hrs 105hp still working daily on the farm
Sean Farrelly	John Deere 425S	1990	H176 NPR	This 425S was imported from France in 2016 and after a cosmetic makeover appeared in the project 5S documentary that was filmed on a Suffolk farm in 2017 alongside a 40, 44, 47 and 495S. Shortly after filming finished it came up for sale in Oatfields dealership and I purchased it in January 2018.
Martin Edwards	Ford 6810	1991	H925RTX	Ford 6810 purchased 5-6 years ago from previous owner who imported it from Holland. In good original condition
Sean Farrelly	John Deere 475S	1991	H574 CTR	Supplied new in 1991 by Hampshire dealership John Seale to a local estate. There it worked very low hours before moving to a small farm in Cheltenham. I purchased it in July 2018 and it has now just clocked over 3000 hours from new. It appeared in the classic tractor magazine in March 2015.

BARN ENGINES

NAME	YEAR	BRIEF DESCRIPTION & HISTORY
AJ Giblin	1936	The saw is 2-1/2 HP open crank engine with 5' saw blade. Owned by Mr A J Giblin for 30 years.
David Smith	1925	Lion Engine, petrol - paraffin made in Gillingham, Dorset. Now seen driving a Lion water pump.
SA Smith	1922-24	Single sleeve valve engine used to drive a sausage machine at a Butchers shop in Ongar, Essex.



SCAN TO USE PLANNER

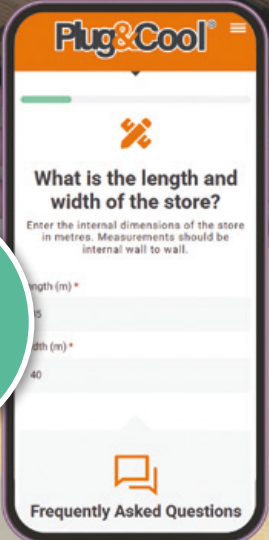
Plug&Cool



SCAN TO USE PLANNER

Home of the UK's Number One Grain Cooling Fan.

10% DISCOUNT
WHEN YOU USE THE GRAIN STORE PLANNER!



“PROUD TO SUPPORT THE ESSEX YOUNG FARMERS”



SPONSORSHIP

HARRY PILCHER

THANKS TO

A.H. Gemmill Hay & Straw

Agrii

Avant South East

Beckerings Sporting

BFS

Birketts LLP

Camgrain

Cefetra Limited

Di's Supplies

Ellisons

Galatea Feeds

Gibbons Group

Hugh Pearl

(Land Drainage) Ltd

Hydrahose

Kelly's Turkeys

Nuclear races

Palmers solicitors

Rickard Luckin

St Cedds

Stanfords

Templant

TSP

Whirlodge & Nott

Wickham Engineering

2026 SHOW SPONSORED BY:



We would like to thank all of the businesses for their support this year, especially our main sponsor; Hugh Pearl (Land Drainage) Ltd. These businesses provide resources, both financial and otherwise, without which the show's running would not be possible.

In return for their support, our sponsors receive a range of benefits including prominent branding at the event, exposure to a large, engaged audience and the satisfaction of supporting a great cause.

We work closely with our sponsors in the lead up to the show day to ensure their own objectives are met and that they receive maximum value for their investment.

Overall, the support of our sponsors is instrumental in making the Essex Young Farmers' Show the success that it is. We are tremendously thankful for their contributions and look forward to working with them again for future iterations.

Harry Pilcher

“In return for their support, our sponsors receive a range of benefits including prominent branding at the event, exposure to a large, engaged audience and the satisfaction of supporting a great cause”

A leading firm of solicitors in East Anglia

And your partner in protecting
your legal interests



Providing legal services from
offices across Essex and Suffolk

01206 593933

www.holmes-hills.co.uk



SHOW MAP & TIMETABLES

SITE MAP OVERLEAF

MAIN RING

- 09:45-10:15:** Puckeridge and the Essex Hunts Display
- 10:15-11:00:** Vintage Tractors and Steam Display
- 11:00-11:45:** Knights of Albion Jousting Display
- 11:45-12:30:** Farming Through the Year Display
- 12:30-13:15:** Extreme Bike Battle Display
- 13:15-13:30:** Essex Agricultural Society Long Service Award
- 13:30-14:15:** Knights of Albion Jousting Display
- 14:15-15:00:** Hugh Pearl (Land Drainage) Ltd Display
- 15:00-15:45:** Extreme Bike Battle Display
- 15:45-16:00:** Tradestand Awards
- 16:00-16:30:** Lawn Mower Racing
- 16:30-17:00:** Tug of War



EQUINE RING

- 10:00-10:45:** UKPA (United Kingdom Polocrosse Association)
- 10:50-11:25:** Pony Club Mounted Games
- 11:30-11:55:** Retraining of Racehorses (ROR)
- 12:00-12:45:** JPL Shetland Racing
- 12:50-13:20:** Henny Heavy Horses Demo Team
- 13:30-14:00:** Carriage Driving Trials Demo
- 14:05-14:35:** Pony Club Mounted Games
- 14:40-15:10:** Puckeridge and the Essex Hunts Display
- 15:15-16:00:** JPL Shetland Racing







GAME RING

- 10:00-10:20:** Essex Fly Fishers
- 10:25-10:55:** Barleylands Birds of Prey
- 11:00-11:30:** Puckeridge and the Essex Hunts Display
- 11:35-11:55:** Chris Meacham Ferrets
- 12:00-12:30:** Misselchalke Gun Dog Display
- 12:35-13:05:** Dog and Duck Show
- 13:10-13:30:** Essex Fly Fishers
- 14:00-14:30:** Barleylands Birds of Prey
- 14:35-14:55:** Chris Meacham Ferrets
- 15:00-15:30:** Misselchalke Gun Dog Display
- 15:35-16:05:** Dog and Duck Show





KEY:

-  Emergency Exit
-  Toilets, Disabled Toilets & Baby Change
-  First Aid & Steward's Office
-  Drinking Water
-  ATM Facilities
-  Food Court

FoF: 1942 Streetfood
F1: 1st Choice 3D
A1: 5 Counties Contracting Ltd (Coxalls)
F1: Aborigicultural Association East Anglia Branch
D: Agrifac UK
A1: Agriii
RC: Amber Affair
F3: Anglia Ruskin University/Writtle College
FR: Arbtrec Tree Services
B2: Ashmore Oak Clothing Company
A2: AT Bone & Sons Ltd
E2: Atom Hydraulics Ltd
C2: Attmere Plant Repair
FoF: Auntie Ree's Cookies
B2: Autosmart/Birchfields Ltd
A2: Avant South East Ltd
F1: Bak4
ED: Barleylands Farm Park (H R Philpot & Son)
F1: Barrow Farm Riding for the Disabled
RC: Beachcomber Crafts
FR: Beany Art Sculpture
FoF: Belbin Native Seafood
F2: Bex's 4x4 Ltd
C2: BFS Fertiliser Services Ltd /
 BFS Fuel Services Ltd
B3: Boo's Barking Bakery
F3: British Racing School
FoF: Brockleby's Pies
D: Brook Farm Plant & Grounds Maintenance
FoF: Brownbread Artisan Ltd
B3: Butternut Box/Marro
RC: C L Silver & The Rural Bird
B2: Camgrain
FoF: Candy Carnival Fudge
E2: Chandler Material Supplies Ltd
F1: Charity Link obo Breast Cancer Now
GF: Chris Meacham Ferrets, Mole & Rabbits Control
D: Church W A (Bures) Ltd
E1: Claas Manns Ltd
RC: Classy Art & Craft
RC: Clocks in the Woodshed
F3: Cooks Agricultural Engineering Ltd
RC: Countryside Resin
F1: Courtyard Bridal
RC: Cowhides of Brazil Ltd (IA Enterprises)
RC: Crafty Mare
B1: Crawford's Commercial Vehicles
E1: Crawford's Group
C2: CSH Environmental Ltd
F1: D&V Fashions
B3: D. J. Gemmill
RC: Daisy M Ceramics
B3: Darins Stix and Bitz
E2: DEFRA
E1: Dengie Crops Ltd
C2: Di's Supplies
F1: Dogodog Photography
HR: Dunmow Emporium
B3: Eden Country Wear
FoF: English Spirit Distillery
B2: Ernest Doe & Sons Ltd - Retail
 Showroom Stand
E1: Ernest Doe/Ernest Doe Power
B2: Essex Agricultural Society
B3: Essex and Suffolk Rivers Trust
D: Essex and Suffolk Water
FoF: Essex Bakery
ED: Essex Bee Keeper Association

F3: Essex Cat Centre - Cats Protection
B3: Essex County Fire & Rescue Service
GF: Essex Fly Fishers' Club
C1: Essex Grab Hire Ltd
F1: Essex Horse and Pony Protection Society
F1: Essex Local Nature Recovery Strategy
F2: Essex Police Rural Engagement Team
RC: Essex Woodcarvers
B3: Eye Level Optical
C1: F J Bosworth and Sons
FoF: Fairfields Farm Crisps
F2: Farm & Country Supplies Ltd
B2: Farmacyard Novelties
B1: FCN
FR: Fen Contracts Ltd
FoF: Field of Cheese
FoF: Fine Food Land
F1: Garden Libations Ltd
GF: Gary Knight Taxidermy
D: George Browns Ltd
B2: Gepp Solicitors
RC: Glass on Glass
E2: Guide Dogs
C1: Harlow Agricultural Merchants Ltd
F1: Herd & Healy
F1: Hero Paws
FoF: Hilton Macarons (Love A Taste Ltd)
D: HM Trailers
B3: Holmes & Hills Solicitors
FoF: Hol's Bakes
FR: Hornby Enterprises Ltd
A1: Hosplant
F1: Hounds of Hanningfield Gin
C1: Hugh Pearl (Land Drainage) Ltd
B3: Inspired Health Chiropractic Ltd
F1: J & B's Barkery
EQ: Jack Johns Farriery
FR: JRC Timber
RC: Juniper Hill Silver Ltd
A2: Kingfisher Drainage & Jetting Ltd
E2: Knightland Developments
B1: Kozy Kikoy
B3: KW Metal Products Ltd
A3: Lift and Shift Transport 247 Ltd
FoF: Lilly's Kitchen
RC: Little Sign Studio
RC: Lybo Coasters
B3: Mary of Inworth
RC: Massagical
B2: MDT
RC: Meadow Cottage Crafts
FoF: Meadow Oak Distillery Ltd
HR: Merton Hall Shrubs & Plants
RC: Metalistmatt Metal Creations
D: Micheldever Tyre Services
 (Pro Tyre, Tyremart Dunmow)
E2: Mid Essex Diabetes Support Group
GF: Misselchalke Gun Dog Display
FoF: Mr and Mrs Olive Uk Ltd
B1: National Farmers' Union
F1: Norton Taylor Nunn Ltd
F1: O'Donnell Moonshine
B3: Off The Rails
D: Oliver Landpower
D: Owls Hall Environmental Ltd
D: Palmers Solicitors
D: Pawsome Bites
B3: Pegwell Spirits

HR: Pixies Plants
E2: Pocknells Wealth Management
B1: Proloved Country Clothing
RC: Print My Studios
FoF: Procter's Sausages
D: Pro-Van Ltd
GF: Puckeridge & The Essex Hunts
B3: Puddle Ducks Chelmsford & North East London
RC: Pulse Magnetics
F1: Quality Foster Care Ltd
A1: R J Bateman Engineering Ltd
B1: RABI
D: RC Boreham & Co
B1: Rickard Luckin Limited
A1: Roe Environmental Ltd
B3: RSPB
RC: RT Creations
F1: Samantha Wuidart Portraits
C1: Samco & Shrim Farmers Ltd
B2: Savills (UK) Ltd
B3: SB Machinery Ltd TA SB Trailers
FoF: Scoff Your Face
B1: Sea Imports
GF: Seabrook Sporting
F1: Sew Dutch
EQ: Shire Horse Society
D: Solar Green Ltd
B3: Splash of Ice
D: Spraytec Ltd
F3: Stanton's Farm
FR: Steve Mayhew
RC: Suffolk Gifts
FoF: Sussex Biltong
FoF: Sweets Dee's
RC: Tangled Vine Ltd
GF: Tees Law
A3: Templant Hire Ltd
F1: Temprd Ltd
A2: The Agricultural Parts Company Ltd
F3: The Alpaca Shop
FoF: The Cheese & Pie Man
B3: The Conditment Cupboard
B1: The Country Footwear Co
F1: The Crafty Git
FoF: The English Wine Tasting Company
F1: The Essex Will Company Ltd & Lesley's Crafts
FoF: The Immaculate Collection
F1: The Lime Place Suffolk Ltd
FoF: The Podgy Pie Man
B1: The Ratchet Shop/AVT-Imports
FoF: The Saffron Ice Cream Company
F3: The Treat Box
FoF: Thoroughbred Wines
FoF: Tiptree - Wilkin & Sons Ltd
FoF: Totham Bangers
A1: Town & Country Pests
A2: Tuckwells
FoF: Twisted Treats
GF: Valley Views Bushcraft
F3: W.Moulton-Day Sculpture
ED: Walking with Reptiles
F2: Warwickshire Clothing
D: Westpoint Farm Vets
RC: WiccaKnitta
HR: Wildthings Woodcraft
D: Woodlands Teak Garden Furniture
B1: YANA
FoF: Yum Yum Tree Fudge Ltd

Palmerslaw

Looking for a law firm that's ahead of the herd?

Speak to our team in Chelmsford:

☎ 01245 320007
palmerslaw.co.uk

Palmers House,
75 Springfield Road,
Chelmsford, CM2 6JG

Moving forward
together >

Visit our stand
(in Block D)



**CRAWFORDS
GROUP**

YOUR TRUSTED LOCAL MACHINERY DEALER

Serving across the South and South East UK



CRAWFORDSGROUP.CO.UK



SUBSCRIBERS

TIA BRANDON & LYDIA WOMBWELL

Hi everyone,

We hope you're having a fantastic day at the Essex Young Farmers Show! We're back in the Subscribers' tent again this year and are really looking forward to catching up with familiar faces, as well as meeting plenty of new ones.

For those who might not know, becoming a Subscriber is a great way to support your local Young Farmers club. Your contribution helps fund events, competitions and opportunities for members throughout the year, while keeping you connected to the organisation.

We've also recently introduced our new Associate membership. This includes everything our Subscriber membership offers but is designed for those who may have recently left Young



Farmers, have young families, or simply want to stay involved and support from the sidelines. The cost remains the same, £45 for an individual or £65 for a couple.

All Subscribers and Associates receive a range of benefits, including:

- » A quarterly Essex Young Farmers magazine
- » Separate parking at the Essex Young Farmers Show
- » Show tickets, one for individual membership and two for couples
- » Invitations to exclusive Subscribers and Associates events

We've already enjoyed some events this year, including drinks and canapés and a fantastic Easter egg hunt, and there's plenty more to come.

You'll find us in the Subscribers' tent throughout the day, so do pop over for a chat, find out more, or get signed up.

We look forward to seeing you and hope you have a fabulous day at the show!

Lydia and Tia x





SUPPORTIVE BY NATURE.

We are pleased to support the 2026 Essex Young Farmers show.

There is a lot going on this time of year, so when your crop is ready, you need people you can rely on. We're easy to get hold of, straight with you, and there when we say we will be. On farm, on the phone, whatever works. Just simple, honest support that does what it should.

Great range of market leading grain contracts

Keen to quote for your Fertiliser and Seed Requirements

Your independent grain partner

Please contact us:
+44 7825 012730
Bidwell@cefetra.co.uk

For more info visit:
www.cefetra.co.uk



Event Diary 2026

31st May

Dressage Show & Round 2 Summer Dressage League
South Hill Farm, Stock CM4 9PD (on surface)

28th June

Showing Show
Beechwood Equestrian Centre, Rettendon CM3 8DY (on grass)

12th July

The Ozzy Wells Memorial Fun Show
Gay Bowers Farm, Danbury CM3 4JQ (on grass)

26th July

Team & Individual Dressage
Beechwood Equestrian Centre, Rettendon CM3 8DY (on grass)

13th September

Showing Show
Beechwood Equestrian Centre, Rettendon CM3 8DY (on grass)

27th September

Dressage Show & Final Round Summer Dressage League
South Hill Farm, Stock CM4 9PD (on surface)

2026/27

Winter Online Dressage Shows & League

chelmsfordplumbingandheating.co.uk | sales@chelmsfordplumbingandheating.co.uk

CHELMSFORD PLUMBING & HEATING



Boiler Installations
Boiler Servicing
Boiler Repairs

A trustworthy family run business specialising in Gas, Oil, LPG, Electrical, Plumbing, Air-con and Renewables.



Plumbing Repairs and Maintenance

- ✓ All calls are answered personally
- ✓ Confirmed bookings given
- ✓ No job too small!
- ✓ Work covered by 12-month guarantee



Electrical services by NICEIC certified electricians

Call us or visit our website to find out more!



Air Conditioning and Renewables



01245 478588



Di's Supplies



01277 356 881 www.dissupplies.co.uk

AGRICULTURAL LIVESTOCK EQUINE EQUIPMENT & ACCESSORIES



We are suppliers of..

Animal health products, Ear-tags
Electric fencing, wooden & galvanised gates,
Stock fencing, barbed wire and posts,
Drinking troughs, Pipe fittings,

Kids farm toys
Poultry feeders & Drinkers
And much more



Whitesbridge Farm
Margaretting
Ingatstone
Essex CM4 9JT

Opening Times
Monday - Friday
8:30am - 5pm
Saturday
8:30am - 1pm



FARMING THROUGH THE YEAR

LUCY BEALE

Once again, Farming Through the Year is back - but this time, there's a twist. Get ready to witness machinery the ring has never seen before.

In the ring, you'll see the machines farmers rely on throughout the year, each playing a vital role across the seasons.

With commentary from Kate Saunders and myself, we'll guide you through when these machines are used and exactly what they do.

Between us, we've spent the last decade studying and working in agriculture, sharing a particular passion for livestock. Now working together at an agricultural dealership, we're excited to bring that experience to you. We share a genuine passion for the industry and look forward to giving you an insight into what farmers do throughout the year.

The twist this year for Farming Through the Year is a

look at a different type of farming - one that's rapidly growing in popularity across the South East. With over 50 vineyards in Essex, the county has become a major wine-producing region in the UK. This year, we'll be showcasing a selection of machines used throughout the vineyard season, giving you an insight into how grapes are grown, managed, and ultimately harvested to produce English wine. From field to bottle, we're excited to share this fascinating side of modern agriculture with you.

A big thank you to the dealerships for their support and contribution to Farming Through the Year. These include Crawfords, Ernest Doe, Tuckwells, R.C. Boreham, Olivers, and Manns. Your continued support helps bring this event to life, and we truly appreciate your involvement.

We look forward to seeing you all at the main ring!

Lucy





RURAL CRIME IS RISING – PROTECT YOUR FARM & COMMUNITY TODAY

With Rural Crime on the increase, now is the time to review your Security and Protect what matters most.

We offer:

- Free risk assessment
- 24 hour mobile patrols
- Alarm response
- Dog units
- Fast response
- Drone surveillance
- Static guards

***AT K9 SERVICES LTD,
WE PROVIDE
TRUSTED,
PROFESSIONAL
SECURITY
SOLUTIONS
TAILORED FOR
FARMS AND RURAL
COMMUNITIES
ACROSS ESSEX***

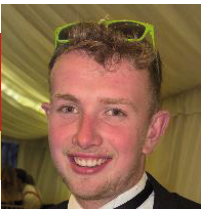
 @k9serviceslimited

Our Contact

Call us today on : 020 3835 6529

Email us on : sales@k9servicesltd.co.uk

Website : www.k9servicesltd.co.uk



FORESTRY

BEN JESSUP

Welcome to the Forestry Area 2026. Forestry is a dynamic and ever-evolving industry, and today we're proud to bring that to life for you.

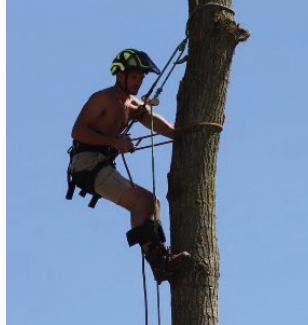
Across the area, you'll experience live demonstrations, see powerful forestry machinery in action, and discover impressive, skilfully crafted creations that showcase the talent and innovation within the sector. Whether you're here to learn, be inspired, or simply enjoy the atmosphere, we hope you have a fantastic time exploring everything on offer.

Here is a bit about a few of our exhibitors here today!

Fen Contracts: Provide You with Experienced Arboriculture Services Throughout the UK:

Since inception, we have developed our business to become a multi skilled company with the ability to cover a broad range of arboriculture services for both domestic and commercial clients. Landowners have a duty of care to maintain trees in a safe condition, irrespective of where they are located or proximity to the

“You'll experience live demonstrations, see powerful forestry machinery in action, and discover impressive, skilfully crafted creations that showcase the talent and innovation within the sector”



general public. Fen Contracts have experience of dealing with Tree Preservation Orders (TPO's), conservation area status and SSSI sites.

Arbtec Tree Services:

Established in 1996, has spent decades refining its craft and building a strong reputation for quality and reliability. We take pride in our work and continually strive for excellence in everything we do. We are fully qualified and accredited, holding NPTC and City & Guilds certifications. Now proudly into its second generation, Arbtec remains a family-run business embracing modern technology and the latest arboricultural techniques. Our approach

ensures a safer, more efficient, and environmentally responsible working environment.

Hornby Enterprises Limited: Forestry company based in Norfolk:

Originally our business focused on oversize timber felling and extraction, however, over the years we have grown to now offer timber harvesting and marketing throughout East Anglia and the East Midlands and a nationwide coverage focusing on large scale tree planting to include woodland creations, highways programmes, woodland restocks and hedge planting.

JRC Timber:

We're committed to offering quality timber, unparalleled service and competitive prices. We turn local surplus trees into high-quality timber products. Aiming to source all our wood responsibly. We never buy from abroad, instead working with local farmers, landowners and tree surgeons to get the best timber for your project.

Beany Art Sculpture:

David Beanland will amaze you with his sculptures that are handcrafted with care, skill and imagination.

Hopefully that has given you an insight to forestry in the day in age enjoy the rest of the show!

Ben Jessup



ESSEX'S LEADING MULTI ACTIVITY HUB

EVENTS

We host award winning, action-packed races for all ages & abilities – from the epic obstacles at Nuclear Races & the muddy, family fun of Mud Tribe, to the high-energy fitness races at Nuclear Fit.

NUCLEAR RACES

Award winning muddy obstacle course events with multiple distances for all ages, including adults (6/12/36km+), kids (1.5/3/4km), & family wave (1.5/4km) options.



MUD TRIBE

All about the fun & making muddy memories together. Gather your tribe & tackle a 1.5km family & kids course (ages 4+) or 5km obstacle course (ages 7+).



NUCLEAR FIT

Outdoor functional fitness race, with 6 stations to test physical strength, endurance, & stamina. Non-running format also available.



ACTIVITIES

Nuclear Essex has something for everyone! Check out just some of the brilliant experiences we offer at our sites.

WILD FOREST

Tackle our exciting muddy obstacle course. We offer school trips, parties, bespoke events, corporate & charity events, obstacle taster sessions and more.



ADVENTURES

High Ropes course over 3 levels, packed with beams, bridges & challenges (age 6+). Zip Trek - Soar 500m through trees & over water on 13 zipwires (age 8+).



NUCLEAR BUNKER

Take a step back in time to the Cold War era with a visit to the Kelvedon Hatch Secret Nuclear Bunker. Self guided tour with personal handsets & films to watch en-route.



CHECK OUT OUR WEBSITE FOR MORE INFORMATION





CHILDREN'S EDUCATION AREA

LUCY WEBSTER

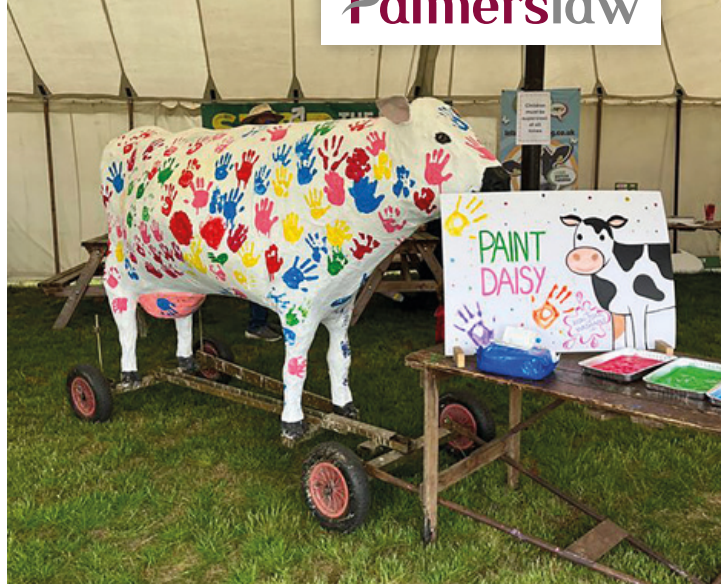
Calling all little adventurers, animal lovers, and future farmers – the Essex Young Farmers' Show just got a whole lot more exciting for kids!

Come along to the Children's Education and activities Area, jam-packed with fun, laughter, and plenty of interactive activities!

From the moment the gates open, the kids' zone will be a hub of energy, creativity, and giggles. We have created a give it a go area this year too. With fabulous activities from our various ring attractions for you to come and try your hand at!

We also have our "Free Seeds to Save the Bees" initiative running again this year, with Wildflower Seeds kindly donated by Church of Bures. So come and pick up a pack of free seeds to help our buzzy friends.

It's all about getting Hands-On and Mucking In! Let your imagination run wild in our interactive activity stations! From farming games to crafty corners, the children's area is all about getting involved.



KINDLY SPONSORED BY:

Palmerlaw

Brace yourselves for some hiss-terical fun!

Throughout the day, kids can meet and greet Maldon Young Farmers' member Evan's fascinating reptiles – think slithery snakes, curious chameleons, and bearded dragons with stories to tell. It's a chance to get up close and personal (and maybe even

a little brave!) with some of nature's coolest creatures.

Any budding artists, sharpen your pencils – our colouring competition is back! With exciting prizes up for grabs and proud moments ahead, it's the perfect way to showcase your masterpiece. Or Come and get creative and make a farm yard friend to take home.

We look forward to meeting you all and joining us at the Essex Young Farmers' Show for a day of unforgettable fun. This year's event promises to be the most exciting yet - see you there!

Lucy Webster



PRELIMS

TIFF BELL

Prelims weekend is definitely one of the best events in the Essex Young Farmers' calendar and consists of a party on the Friday, followed by a day of all the clubs competing against each other in fun games on the Sunday.

The Prelims weekend kicked off with a party on the Friday night - one of the biggest and best parties of the year! For this year's theme we went for Cops and Robbers, it was great to see so many people dressed up, lots of shots consumed and some really questionable dance moves - some were criminal! Thanks to everyone who helped to set up and run the party, it was well worth it!

The next morning many members headed over to High Easter P2P to enjoy a day of racing, lots of pimms and to make



sure the bar was always busy - in our defence the weather was a little miserable so the bar was a safe spot.

Unlike Saturday the weather on Sunday was great - 10 clubs, 27

games and a whole lot of points up for grabs.

The day started with a judge's briefing and breakfast and then it was time for the clubs to take on the 10 indoor and 10 outdoor





competitions. From pinning the clubs on the county, the hula hoop challenge, the mystery box, wiring a plug and fitting people into a potato box, there were challenges for everyone to take part in.

After all the games it was time for something to eat before the lawnmower and tug of war - the tow teams definitely need all the food fuel they could get before a long afternoon pulling

The tug of war saw nine men's teams, six ladies and seven mixed (a new category for us this year). All the teams pulled great but after many pulls these are the top four teams going to show:

Mens teams

- » Halstead
- » Maldon
- » Dunmow
- » Colchester

Ladies teams

- » Dunmow
- » Halstead
- » Maldon
- » Wix

Mixed

- » Dunmow
- » Halstead
- » Maldon
- » Wix



Now for the final scores of the day...

- 1st** Halstead
- 2nd** Chelmsford
- 3rd** Maldon
- 4th** Ongar
- 5th** Southminster
- 6th** Colchester
- 7th** Dunmow
- 8th** Wix
- 9th** Ash & Saff
- 10th** Brentwood

...a big well done to all the clubs and members who got involved

A big thank you to Strutt and Parker for letting us use the field for prelims and Albert and the Buntings for letting us use their barn for the party, it wouldn't have been such a success without you!

**Over and out,
Tiff**





SHOW MUM

EMILY DAVIS & ISSY SMITH

At the heart of show week is a role that keeps everything running smoothly: feeding and fuelling the people who make it all happen. As “Show Mums,” our job is to ensure that every volunteer stays well-fed, refreshed, and ready for the long days ahead.

What many don't realise is that the Essex Young Farmers Show is brought to life entirely by volunteers. From September onwards, the dedicated committee meets monthly, giving up their evenings to carefully plan every detail. Then, in the final week before the big day, we swap our homes for caravans and tents, transforming an empty field into the vibrant, much-loved showground visitors see.

Behind the scenes, it's a true community effort. We rely on a wonderful supply of homemade treats generously provided by family, friends, and subscribers.

In our makeshift kitchen, we prepare hearty dishes - everything from chilli con carne, curry to BBQs and pasta bakes - keeping spirits high and energy levels up. And, of course, there's always the occasional cheeky takeaway!

It's this shared effort, camaraderie, and dedication that make the show so special - not just for those attending, but for everyone working tirelessly behind the scenes to bring it to life!

We hope you enjoy the show!

Issy and Ems x



“It’s this shared effort, camaraderie, and dedication that make the show so special - not just for those attending, but for everyone working tirelessly behind the scenes to bring it to life!”



EXHIBITION HALL

WILL GALVIN

KINDLY SPONSORED BY:



What is Young Farmers?

Would you believe me if I told you that this show is just the tip of the iceberg?

What if I told you that every single week, people from all walks of life – farmers, students, engineers, dancers, office workers and everything in between – come together across Essex for something completely different?

Well, it's all true.

Young Farmers' Clubs (YFC) are one of the UK's largest rural youth organisations, open to anyone aged 16–28. And despite the name, you don't have to be a farmer to join Young Farmers. In fact, many of our members have never set foot on a farm before joining – they just come along to try something new, meet people, and get stuck in.

So, what do we actually do?

The short answer: a bit of everything.

One week you might find yourself on a farm tour or visiting a local brewery. The next, you could be at a pub social, a sports night, or even a karaoke competition. We've hosted everything from laser tag and pottery painting to equestrian events and public speaking nights.

For those with a competitive streak, YFC is hard to beat.



Our members take part in a huge range of competitions throughout the year – including tug of war, football, hockey and dodgeball, alongside more creative challenges like arts & crafts, debating, cookery and even lawnmower racing and raft building. There really is something for everyone, whether you prefer getting muddy or getting creative.

But it's not just about fun (although there's plenty of that). Young Farmers also supports members in developing real-life skills. Through our rural training fund, members can access funding and support to gain qualifications and practical experience within agriculture and beyond – opening doors to new careers and opportunities.

And then there are the events.

From legendary YFC balls and themed parties to point-to-point meets, pantomimes and charity fundraisers, the social calendar is packed all year round. More importantly, it's where friendships are made – the kind that last a lifetime.

At its heart, Young Farmers

is about giving young people the chance to try new things, build confidence, and be part of something bigger – all while spending less time on their phones and more time out in the real world.

Join Us

If you like the sound of it, there's never been a better time to join.

SPECIAL SHOW OFFER:

Sign up **today** and come along to 3 Club Meets as a taster. Then pay your £35 and you'll receive:

- » Membership for the 2026–2027 season
- » PLUS the remainder of the 2025–2026 season for free!

That means you can start getting involved right away and carry on through the next full year.

Come and find us at the “What is YFC?” stand today to meet your local clubs, ask questions, and see what it's all about.

Give it a go. You might just find your people.



FIVE MINUTES WITH...

WILL HONEYWOOD SHOW CHAIRMAN

Tell us a bit about yourself both inside and outside of Essex Young Farmers?

Hello everyone, I'm Will, I'm 23 years old and I'm the Show Chairman for the 2026 Essex Young Farmers Show. I've worked within the agricultural industry for the last six years and for the past two and a half years I've been working for Hugh Pearl (Land Drainage) Ltd where I started by running the agricultural trenching gang and now work as a Contracts Manager.

What made you take on this role?

I've been involved in the show for the last four years and have loved it every year. I was really excited to take on the role of Show Chair after the 2025 chairman Jonathan Hockley asked if I'd be up for the challenge. Having been on the committee last year and seeing what an outstanding job Jonathan had done I knew I had big boots to fill. I would always recommend that Young Farmer members get involved in show week as it really is what YF is all about. Every year you learn more about the showground and what goes into putting on such an amazing event and believe me, there's a lot! I couldn't have done it without the brilliant committee I've had this year.

When did you become part of Essex Young Farmers?

I joined Halstead Young Farmers five years ago and have never looked

back. When I first joined, we were quite a small club but over the years we've grown into a much bigger one whilst still keeping our Halstead traditions alive. I've definitely made friends for life and created plenty of great memories along the way.

What other roles have you held in Young Farmers?

During my time in YF I've been lucky enough to take on a variety of roles at both club and county level. In my second year at Halstead, I became Programmes Rep which was a great role but not an easy one. The following year, I was Vice Chairman which I really enjoyed, although it did feel like being thrown in at the deep end after only two years in the club! After that, I became Chairman of Halstead for a year which I absolutely loved - it gave me a real sense of responsibility, running the club is something I'll never forget. As well as club roles, I've also been involved with the show committee. In my second show I was the lawn mower racing rep which was my first proper committee role. The following year I was in charge of the show party and bar with Emily Davis, and now I've taken on the role of Show Chairman.

What is your favourite part of the show?

There isn't much not to enjoy but show week as a whole is definitely a highlight. We usually move onto

the showground the week before to set up our compound and caravans. It always amazes me how an empty grass field can be transformed into a full showground in just a week. There are so many areas to the show including the Game Fair, Equine, Livestock, Main Ring, and the Bar, to name a few. My committee is made up of over 50 Young Farmers, and I couldn't put the show on without them. It's something really special, especially as it's all voluntary - we do it for our own enjoyment as well as to give everyone a great day out.

What should every visitor make sure they do before they go home?

There's so much to see at the show, so make the most of it. Whether you're into tractors, steam engines, or rural crafts, there's something for everyone. We always aim to fill every part of the showground, so don't miss anything! If I had to recommend one place, it would have to be the bar - we Young Farmers definitely know how to run it!

I'd just like to take this opportunity to thank my committee for all their hard work this year, and a huge thank you to everyone who joined us today. I hope you've had a fantastic time, and we look forward to seeing you all again next year.

**Thanks for now,
Will**



FIVE MINUTES WITH...

LUCY HITCHCOCK SHOW SECRETARY

Tell us a bit about yourself both inside and outside of Essex Young Farmers?

Tell us a little bit about yourself. Hi, I'm Lucy and welcome to EYF Show 2026! I am 26 years old and work at Camgrain covering logistics and stock management. Other than being a huge advocate for the British agricultural industry, I love skiing and socialising with friends in and out of young farmers.

When did you join Essex Young Farmers?

I joined Ashdon & Saffron Walden YFC back in 2015 when I was studying Agriculture at Writtle College. It's been a very enjoyable 10 years and I wouldn't change it for the world. I have met the most

wonderful friends through the federation and had some amazing times.

What other roles have you held in Young Farmers?

I have held a variety of roles within Young Farmers at both club and county level. At club level, I started as Activities Representative, also writing quarterly magazine reports and maintaining the scrapbook, before progressing to Secretary, Vice Chair, and Chair. At county level, I have been involved in Activities, including organising two county balls, as well as Training and Development, and later served as Secretary, Vice Chair, and Chair. I have also taken on show roles including Subscribers, Main Gates, and

Show Mum, supporting the smooth running of key events.

What made you take on this role?

It is a role I have always wanted to do and being it is my last year, I thought I better go out with a bang!

What is your favourite part about the show?

Show week is always a highlight of the year – it's a busy and demanding time, but also one of the most enjoyable. We all work incredibly hard, often long hours, but there's a real team spirit throughout. Everyone is willing to muck in and support each other wherever needed, which makes the whole experience both rewarding and a lot of fun.

“We all work incredibly hard, often long hours, but there's a real team spirit throughout. Everyone is willing to muck in and support each other wherever needed, which makes the whole experience both rewarding and a lot of fun”

DJ MAYHEW

Stephen Mayhew

T: 07816 349192

E: stevemayhew@live.co.uk

DISCO HIRE PARTIES - WEDDINGS PA SOUND & LIGHT HIRE

FULLY INSURED & ALL EQUIPMENT
ELECTRICALLY TESTED

Neil Beaton & Son Farming Partnership

Proud Suppliers of Quality Breeding Sheep



- North Country Mule, Suffolk X and Texel X shearing ewes available yearly.
- Full and up to date medical records provided for all stock.
- Competitive transport rates offered.
- Any size orders welcome.
- All stock is Red Tractor Farm Assured.



Office: 01799 584366 | Hamish: 07831 775520
sandonsfarm@gmail.com

JRC Timber was established to turn local surplus trees into high-quality timber products. We aim to source all our wood sustainably, never buying from abroad, instead working with local farmers, landowners and tree surgeons to get the best timber for your project.



We also offer a sawmilling service, with our fabulous Woodmizer mill!
Collection available to local areas.



JRC TIMBER

We can supply you with sustainably sourced boards, beams, posts or planks all available to your specification.
Viewing available by appointment.



Get in Contact:

Tel: 07596 836838

Email: info@jrctimber.co.uk

Web: www.jrctimber.co.uk

Based in Colchester, Essex.



ACTIVITIES

IMOGEN POHL AND ALBERT HOLLAND

This year Albert and I have been in charge of the Activities events, we have had a really good time organising two main events this year – the Chairman’s Party and the Golden Welly Ball.

The Golden Welly Ball was definitely a highlight. We had just under 200 people there and it was the first year a sit-down meal has been organised - this worked really well and made the whole evening feel more like a ball. It was great seeing all the clubs together on tables, and the atmosphere all night was just brilliant. We had lots of lovely VPs helping out behind the bar, awards being presented and an auction which went down a bit too well! Overall, it was a great event with really positive feedback.

The Chairman’s Party was also a big success, with some brilliant outfits and bringing in just under 200 people again!



For anyone who doesn’t already know, Essex Young Farmers is all about bringing people together who have an interest in agriculture or just rural life in general, and you genuinely don’t have to be a farmer to get involved. It’s run by young

people, for young people to enjoy and get involved, and there’s so much going on from events like these to competitions, travel and the County Show which brings thousands of people together each year. We’ve got lots of exciting things planned for the rest of the year and we’re really looking forward to getting stuck into organising them.

If you’re thinking about getting involved, whether that’s your local club, county, or even the show committee, definitely just give it a go. Young Farmers is such a good way to meet people and make lifelong friends, so don’t miss out!

Imogen Pohl



WeldonBeesly

RURAL CHARTERED
SURVEYORS AND
LAND AGENTS

- Estate Management
- Valuation
- Agency
- Farm Building Lets
- Landlord & Tenant
- Farm Business Advice
- Property Compensation
- Planning & Development



 @WBeesly  @WeldonBeesly  @Weldon_Beesly  @Weldon-Beesly

Bishop's Stortford | 01279 798866
Hitchin | 01462 557780

info@weldonbeesly.com
www.weldonbeesly.com




PATON & LEE
EQUINE VETERINARY SURGERY

RCVS
ACCREDITED
PRACTICE

COMPLETE VETERINARY CARE FOR HORSES, PONIES & DONKEYS
SERVING ESSEX & SUFFOLK

- Routine & advanced dental care
- Half price visit fee days
- Pre-purchase examination & exports
- Vaccinations & routine health care
- Full surgical & inpatient facilities
- Digital x-ray, ultrasound & endoscopy
- BEVA approved AI & breeding centre

The FIRST place
for your horse's healthcare.
Information
Reassurance
& Treatment

Hoo Hall, Oak Road, Rivenhall, Witham, Essex, CM8 3HG
www.patonandlee.co.uk | info@patonandlee.co.uk | 01376 513369



Standing Equine MRI For
Essex & Suffolk

RickardLuckin
Chartered Accountants and Tax Advisers



Advice that
stays with you

Your business deserves a relationship with advisers who stay the course. Visit our marquee and chat with our expert team.

rickardluckin.co.uk | 01245 254200



SOCIAL MEDIA

LUCY STAMMERS & ELISE ELLIOTT

Hey, we're Lucy and Elise! We have been updating and running the Essex Young Farmers' social media and creating promotional content for the EYF show over the last year!

We both work in digital marketing, so having free rein to be as creative as we like with content creation across our social media platforms is certainly lots of fun! If you visit our Instagram or Facebook page, you'll discover an array of upcoming parties, balls, competitions and fundraising events that Essex Young Farmers and the ten clubs within it are putting on. You'll also see different meets that our clubs organise, competition results and behind the scenes of what we get up to as young farmers! So, if you're not already following us, now is the time to do it!

We also recently started a TikTok account for Essex Young Farmers that will hopefully follow the success of the TikTok accounts set up by our clubs. This is another way for us to show you all how much fun we get up to as members of Young Farmers and proving that you 'don't have to be a farmer to be a Young Farmer.'

Social media is not only important for sharing updates, but for promoting the wonderful work that the members of Essex Young Farmers do. Each year every club chooses a charity (or



two) to fundraise for. They then put hours of work into planning, prepping and hosting an array of different fundraising events across the year for members, subscribers and the general public to attend, from tractor runs, to firework displays, parties, Christmas tree collections, quizzes and compost collections. Social media is fundamental in building awareness of this and engaging an audience to make these events as successful as possible and ultimately raising lots of money for these charities.

If you're aged 16-28 years old

and you would like to join Young Farmers, follow us on Instagram, Facebook and TikTok and look out for any 'New Members' evenings or just contact us to find your local club!

We hope you have a fantastic day at The Essex Young Farmers Show!

**Lucy & Elise
Essex Young Farmers' Social
Media Reps**

- Essex Young Farmers**
- @essexyoungfarmers**
- @essexyoungfarmers**

DEUTZ-FAHR



POLARIS

EGO

SUMO

MAJOR 



Come and say hello, *you'll find our stand by the main ring*

A family run machinery dealership
committed to providing customers with a
personalised service and ongoing support.

RCB
R C BOREHAM & CO

60
1963





COMPETITIONS

TIFF BELL



Hi everyone, I am Tiff the Competitions rep for Essex Young Farmers.

This year has seen clubs compete in dodgeball, hockey and public speaking ahead of the Eastern Area Spring competitions in March.

The Eastern Area spring comps were a great day for Essex. We came away with an incredible 1st in Brainstrust – well done Ongar who are now off to nationals to compete with the best clubs from all over the UK.

We also got 2nd in:

- » Dodgeball (Ongar/ Maldon)
- » Hockey (Dunmow)
- » Mace Debating (Ongar with help from Dunmow)

- » Senior member of the Year (Lucy Stammers, Maldon)
- » Senior Situations Vacant (Will Galvin, Ongar)

And a great 3rd in Intermediate Situations Vacant (Charlie Rodgers, Ongar). A super successful day for Essex

By the time you read this our new 'Fittest Farmer' competition will be all over with. This competition will see boy and girl duo teams take on strength and endurance challenges to be crowned 'Essex's Young Farmers' Fittest Farmer. I can't wait to see who our winners will be!

That's all from me.

Tiff Bell





ST EDMUND'S COLLEGE
& PREP SCHOOL



DISCOVER

THE ST EDMUND'S



A High Performance
Learning school

2026
OPEN DAYS
FRI 20 MAR
SAT 19 SEPT

SCAN TO BOOK



stedmundscollege.org

EXCEPTIONAL CO-EDUCATIONAL
SCHOOL FOR AGES 3 UPWARDS



RECYCLING CAMPAIGN

HARRY HONEYWOOD

Hello everyone!

It's nice to see the lighter evenings and warmer weather - the farms are really starting to spring back to life, which for the Young Farmers' recycling campaign is excellent news.

Essex Young Farmers and CSH teamed up in 2022 to collect and recycle farm waste, and in those four years we have currently recycled 420 tonnes of plastic - raising over £40,000 which all goes back into EYFC. Before we started the campaign, most of this agricultural waste ended up in landfill... but now it gets recycled into new products, for example garden furniture. Last year, it was used to create 10,000 plastic pint cups which were used at the bar on show day.

It's a very effective scheme where farmers can deliver their waste directly to CSH or arrange for one of the clubs to collect it and take it over there. The waste



materials that are included in the scheme are: cardboard, clean or washed chemical cans, agricultural containers and fertiliser and seed bags (pp woven bags). The waste is then weighed and depending

on how many tonnes are provided, CSH makes a donation to EYFC - when dropping off the waste, you can choose which club you would like the money to go towards.

For any more information, please visit the display stand on the show ground, visit the website www.cshenviromental.co.uk/essex-young-farmers or call me on 07375412330.





Join us for our final Open Morning
of the academic year
Wednesday 17 June 2026



Independent co-educational school in Chelmsford



Ambition, Adventure, Achievement



Clarity in everything we do

Tailored legal
solutions for you,
your family and
your business.

Contact us today

tsplegal.com

01206 574431

enquiries@tsplegal.com

Offices located in Colchester and Clacton



FUNDRAISING

ISSY SMITH AND MEGAN COCK

Over the past year, Essex Young Farmers have once again demonstrated the incredible power of community, generosity and a shared commitment to making a difference. Our fundraising efforts are at the very heart of what we do, bringing people together not only to have fun, but to support causes that truly matter.

This year, we are proud to be supporting two remarkable charities: YANA and Cambridge Children’s Hospital — both of which hold deep personal significance for many of our members and the wider rural community.

YANA (You Are Not Alone) provides vital mental health support to those involved in agriculture and rural businesses. Farming can often be an isolated and demanding way of life, and access to confidential, understanding support is absolutely crucial. YANA offers funded counselling, mental health training, and suicide prevention resources, while also working tirelessly to break down stigma and encourage open conversations around mental wellbeing in rural areas. It is a cause that resonates strongly with Young Farmers, and one we are incredibly proud to champion.

Alongside this, we are supporting the campaign to build Cambridge Children’s Hospital — a groundbreaking project that will



transform healthcare for young people across the East of England and beyond. The hospital will provide specialist physical and mental health services for children, as well as acting as a leading research facility. With construction on the horizon, fundraising remains essential to help bring this vision to life. The impact this hospital will have — not just regionally, but nationally and globally — cannot be overstated, and we are honoured to play a small part in supporting such an important initiative.

Our fundraising calendar has already been packed with events that showcase both the enthusiasm of our members and the generosity of our supporters. We kicked things off with a lively “Boozy Bingo” evening, filled with laughter, dancing and plenty of memorable moments. Thanks to the fantastic turnout and support, the event raised an impressive £714.62 for our chosen charities — a brilliant start to the year.

We then rounded off the festive season with our Charity Christmas 5K Dog Walk and Run, which saw families, friends and four-legged companions come together in true festive spirit. From Santa suits to reindeer antlers (and some very well-dressed dogs!), it was a wonderful community event that highlighted exactly what Young Farmers is all about — bringing people together while raising vital funds.

More recently, our much-anticipated Golden Welly Ball proved to be another standout success. With a fantastic atmosphere and incredible

generosity shown throughout the evening, the event raised significant funds through auctions and raffles, including some highly sought-after prizes. Events like this not only contribute to our fundraising total, but also showcase the strength and spirit of our Young Farmers community.



Looking ahead, we have an exciting programme of events planned, including a sponsored ride, our ever-popular Farm Games, and a tractor and car wash — all designed to

engage the wider community while continuing to raise as much as possible for our charities.

At its core, fundraising within Essex Young Farmers is about far more than the events themselves. It’s about supporting causes that directly impact our communities, raising awareness of important issues, and making a tangible difference to people’s lives. Every ticket purchased, every donation made, and every event attended helps us move closer to that goal.

We are incredibly grateful to everyone who has supported us so far — whether by attending events, donating prizes, volunteering time, or simply spreading the word. Your support enables us to continue doing what we do and to make a real difference where it is needed most.

With such a strong start and so much still to come, we are excited for what lies ahead and hopeful that this will be one of our most impactful fundraising years yet.

Issy Smith and Megan Cock



CLUB REPORT: ASH & SAFF



REPORT: SOPHIE STEWART • CHAIR: AARRON WALTERS (07586 833124)
SECRETARY: ANNELISA HULME (07702 555115) • @ASHDONANDSAFFRONWALDENYFC



Hello everyone, as we come round to another EYFC show, I would like to update you on our year as a club and what we have been up to, and to introduce ourselves to those who are new!

We started off the year strong with a new members night which was well attended. It was great to see everyone again after the summer period, and to introduce new members into the club. We held our Harvest Supper in November, which was a lovely evening, with past and present members all together.

In regards to weekly meetings, we have enjoyed a variety of tours, talks, activities, quiz nights, and of course pub meets! To name a few, we have had a Saffron Walden Fire Station tour, a talk from Essex Police Rural Engagement Team, and also a night giving newer members an insight into committee roles. We have also had our annual activities, including pumpkin carving and ice skating. As one of the smaller clubs in the county, we also like our pub meets where we are all able to socialise

together. We also like to add quiz nights and bingo to these nights, which are always very competitive!

Once again we had a successful Christmas Tree Collection in support of our chosen charities at Saffron Walden Mencap, and Saffron Walden Community First Responders. This is our biggest fundraiser for the year, and a really nice way to help those in need. Thank you to everyone who organised this event, those who helped on the day, and of course to everyone who donated.

If you would like to come along to see for yourself what we get up to, then please do. It does not have to be a specific new member's evening for you to join us - the more the merrier! Please don't hesitate to get in contact with any questions you may have, you can do this via our club Instagram (@ashdonandsaffronwaldenyfc), or our email (aswyfc@gmail.com)

We hope you have a lovely Show day!

Sophie





CLUB REPORT: BRENTWOOD



REPORT: DAISY FARROW • CHAIR: DAISY FARROW (07359 333948)
SECRETARY: LUKE CLARK (07896 811358) • @ @BRENTWOOD_YFC



Hello everyone! I hope you all have a fantastic day at the Essex YF show - one of the biggest events of the year!

Brentwood Young farmers have been really busy with fun activities and tours like laser tag, bowling and a brewery tour! With lighter days and longer evenings ahead, we plan on doing some clay shooting, barbecues and dog walks!

Not only do we get to have a blast trying loads of different things, we also get to compete against other clubs to earn points and take home the win! Just to name a few of the competitions: football, dodgeball, hockey and even public speaking!

We meet on Tuesdays at 7:30pm at a variety of places depending on that week, usually in Brentwood and surrounding areas. Every few weeks we have a pub meet up at The Old Dog Inn in Herongate, where we also bring fun games and challenges to complete as a team! Joining Brentwood YFC isn't just about the activities and parties, it's about making new friends and learning many different things. As a smaller club, we are lucky to be able to build really close bonds with each other where we support one another through everything.

If you'd like to join us please contact our Chairman: Daisy Farrow, 07359 333948.

Daisy



CLUB REPORT: CHELMSFORD



REPORT: LUKE WINCH • CHAIR: DEVON MATTHEWS (07384 605714)
SECRETARY: MIKEY BELCHER (07340 401593) • @@CHELMSFORDYFC

Hello visitors to the Essex Young Farmers' Show 2026!

I hope you're all having a brilliant day and with any luck, the sun is shining and it's shaping up to be a good one. The arrival of the Young Farmers' Show marks a milestone in the Young Farmers' calendar and with it taking place towards the end of the season, it is a good time to reflect on the club's achievements and events from the year. One thing I can tell you for certain is that we have been very busy indeed! From Farm tours to pub trips, game nights, tractor runs, parties, balls and everything in between, I'd like to think we have covered all bases for our members. Here's a quick recap of what Chelmsford Young Farmers Club has been up to recently.

With the dust settling after a busy harvest, we kicked off the Young Farmers season last September with new and returning members keen and excited to get stuck into another year. With a big influx of new members, we hosted a new members evening which saw over 40 people in attendance! It was a night of ice breaker games which helped get everyone mingling together. It was great to see our old faces of the club making the new members feel welcomed. As we rolled through September into October, we paid some good friends of the club a visit. A group of CYFC members took a trip to Barrow Farm riding school for the disabled where they took part in a volunteering day - helping to carry out some vital jobs such as hedge cutting and grass cutting around the riding school. Barrow Farm riding school for the disabled is a brilliant local charity based near Blackmore who set out to enrich the lives of people with additional needs through horse riding. Barrow Farm are a great charity and Chelmsford Young Farmers were more than happy to be supporting them again this year. A couple of weeks later, we paid a visit to Chelmsford Brew Co. A place that many of our members are



very fond of! We had our annual tour of the brewery which of course had to be followed by a beer tasting session. I for one can confirm that the beers tasted excellent so if you're ever in the Great Baddow area, be sure to drop in and try them for yourselves!

October saw the club get into the spooky spirit as we took a trip to the Whittle Maize maze. We were kindly shown around their pumpkin picking experience and we were also let loose to pick our own pumpkins and carve them. A thank you must go out to the Whittle Maize Maze for hosting us for the evening. Late October saw a significant milestone ticked off on the club's checklist and it is with great pleasure that I can report that Chelmsford Young Farmers Club held its first party in over 6 years and it was certainly a night to remember! The night was filled with plenty of laughs, some questionable dance moves and plenty of drinks. With over 190 members in attendance, we couldn't have been happier with the turnout for our Halloween themed party.

On the topic of parties, Chelmsford Young Farmers have been showing up and showing out to many of the parties and balls that have been hosted by other clubs and the County. The Ash and Saff harvest supper, the golden welly ball, the Essex Young Farmers County ball and the Southminster party were all brilliant evenings to name but a few and that doesn't even touch the surface of the many parties that we've attended!

As we moved from the festivities of Halloween and Christmas into the new year, we certainly weren't slowing down in terms of our Tuesday night meets. We have managed to cover a variety of meetings ranging from a tour of the Aldi distribution warehouse at Boreham, tours of a turkey farm, cattle farm and an arable farm, to charity talks from the Guide Dogs and Barrow Farm RDA. Laser tag, car treasure hunts, a couple of pool and darts nights and of course, even with our busy schedule, we still managed to get a few trips in to the Rose and Crown pub!

Competitions have played a big part in the club's programme with us taking part in all the competitions that have been put on so far. At the time of writing this report, after entering two teams and placing first and second in the recent farm valuation competition, Chelmsford Young Farmers club is sitting in 3rd place in the overall competition standings and with Prelims on the horizon, it's still all to play for so watch this space.

Chelmsford Young Farmers Club has had a busy year to say the least, if any of you are interested in joining the club, feel free to message our club chair Devon or get in touch with the socials at any time.

That's all for now, Chelmsford over and out.

Luke



CLUB REPORT: COLCHESTER



REPORT: LILY HEARD • CHAIR: OLLIE REED (07904 866085)
SECRETARY: JESS GOODCHILD (07376 387440) • @COLCHESTERYFC

Welcome one, welcome all to the main event of the year! It's show time baby! Let's hope nobody breaks a leg though, we're not in that kind of show business. We are Colchester Young Farmers (the best club) and chances are you may have already met us, as we're serving you ice cold beverages all day on the bar, so if you haven't already, come and say hi!

Our chosen charity this year has been Leukaemia UK, they fund world-class research that can be life-changing for those battling with leukaemia through donations and their Leukaemia UK Lottery. Thanks to our very successful Christmas Tree Collections we donated £1100 to support their incredible work across the country, as it's a charity that is very close to our members' hearts.

Earlier in the year, we were thrilled to be able to present a record breaking amount of over £5630 to our lifetime charity The Tom Bowdidge Youth Cancer Foundation. They work to support young patients and their families by funding "age-appropriate spaces for young people with cancer in hospitals across the country".



Our club members have worked extremely hard on our compost run, and certainly put some muscle on after bagging and carrying it around all day during deliveries. However Erin Bown earns a special thank you because without her incredible organisation and admin abilities, all our charitable work would not be nearly as successful without her.

This year has been incredible as a plethora of amazing new members joined us, who I believe are in it for the long haul. Speaking of hauling, we even convinced them to join the Tug of War team! Watch out Essex Young Farmers, we're training by pulling tractors every week, we are not a club to trifle with on the rope. So hey you reading this, make sure to cheer for Colchester in red, come show day!

Our programmes rep Arlo has been on fire with his excel spreadsheets organising meets like brewery tours, a trip to Essex & Herts Air Ambulance, obviously who doesn't like some more wholesome meets like bowling, pottery painting, a sunny dog walk and of course the

pub. On the more disco side of young farmers, our Party in the USA themed party went down a smash hit, with everyone thoroughly getting into the theme by dressing up as icons like Elvis and the United States flag personified. The tunes were flying fantastically in the barn and the dancing was on par with Elvis! Sort of. Maybe not. Okay maybe we're all terrible dancers, but that just means maybe we all need to take a dancing lesson for a meet.

Coming up soon with the warm weather should be paddle boarding, a slip and slide BBQ and potentially a tour around a pig farm! If you fancy joining us at Colchester Young Farmers, you can find us on both Facebook and Instagram so send us a message – we can't wait to meet you!

Thank you to the show team and everyone who works tirelessly behind the scenes to make this fantastic day possible, we hope you enjoy your day as much as we do! See you there!

Lily



CLUB REPORT: DUNMOW



REPORT: LIBBY RICHARDS • CHAIR: ISSY SMITH (07714 784544)
SECRETARY: CHARLOTTE FREEMAN (07452 980940) • @ @DUNMOW.YOUNG.FARMERS

Hello everyone and welcome to our Essex Young Farmers Show and our Show edition. It only feels like five minutes ago I wrote our last magazine entry, yet here we are again with Show Day upon us! As always, we, Dunmow, have been a busy club in the lead up both with our weekly evening meetings, competitions calendar and of course preparing for the Essex Young Farmers' Show, a highlight of our YFC calendar.

Of course, preparations began well before today with a number of our members giving up time and resources over the last few months to ensure today was all set. This week alone several of our members stayed on site working tirelessly...although they do their fair share of partying too to make up for it!

Today you'll see numerous stalls and activities including lawn mower racing, competitive classes and crowd favourite events. Talking of ring events, I had the misfortune of being volunteered for the Farm Fitness competition last year in the main Show Ring by my employers, where two colleagues and I were trialed against other local businesses' teams. Despite being reasonably fit (well, for me!) thanks to the half marathon training block at the time, I was quickly reminded



nothing quite compares you for flipping tractor tyres and hurling weighted sandbags over Heston bales!! Truly humbling! I like to say we were a man down but apparently, I'm a sore loser, more importantly though it brought the wider company together for a good laugh at us, just like young farmers events bring our clubs together from across the county and showcase what we're about; teamwork, resilience, good sportsmanship and plenty of fun.

I mentioned partying, not only did we celebrate with Show party recently, but also the 'Cops and Robbers' themed Prelims party which set the tone perfectly for one of the most entertaining days in the calendar. Prelims was packed with competitive spirit from Tug of War to novelty events, like Harry's unexpected success in bra-removal which will no doubt go down in Dunmow folklore! Overall we were chuffed with our results; Dunmow Girls winning Tug of War and Boys securing 3rd place. And though we finished 7th overall, and with plenty to be proud about, it has given us more motivation to improve our placing.

Other competitions have included a strong show at Eastern Areas competitions, coming second in the Mixed Hockey, fence erecting,

stock judging, and our Charity Clay Shoot hosted in the SRC quarry. Great testaments to our practical and sporting variety. Similarly, our evening meetings have varied from veterinary tours with Paton & Lee, Dunmow Fire Station, Essex Hunt Kennels and with Essex Police Dogs, to name only a few, held weekly on a Tuesday evening. If these are something you're interested in, please contact our Chairwoman, Issy Smith on 07714 784544, or our New Member Representative, Charlotte Freeman on 07452 980940. Alternatively, catch one of us floating around today wearing bright red! You really can't miss us!



It's the combination of days like today, alongside our events, competitions and our Tuesday evening meetings, coupled with the commitment shown by both our committee and attending members that allows Young Farmers to be as successful as it is. Together, with the continued support from our sponsors, volunteers and advisers, who give generously and underpin what we do, we've curated a community that offers opportunities to learn new skills, support charities, build confidence and friendships and enjoy experiences you wouldn't get elsewhere.

So with that, we're proud to share our show with you – enjoy!

Libby x





CLUB REPORT: HALSTEAD



REPORT: LAUREN MAXTEAD • CHAIR: JAMES MANGHAM (07437 518134)
SECRETARY: CONNIE MACDONALD (07538 460143) • @HALSTEADYFC

It's that time of year again for the Essex Young Farmers Show 2026!

Halstead is based in North Essex, with around 50 members aged 16 to 28. We come from diverse backgrounds, but all share a common interest in rural life and, of course, socialising! At our weekly meetings, we take part in a range of activities, tours, talks, and fundraising events. Highlights so far this year have included a tour of Boydells Farm with Maldon Club, the English Spirit Distillery tour, and a talk from Guide Dogs UK. Some of the activities we've been getting up to include ice skating, sports day, bowling, driving range sessions, and festive events such as gingerbread making and pumpkin carving. There are also many balls and parties hosted by fellow clubs, where we dress up and embrace the different fancy dress themes.

This year, Halstead has given many of the competitions a good go. We are currently 6th on the competition leaderboard and slowly working our way up. There are many competitions throughout the year, including dodgeball, hockey, farm valuation, clay shooting, and stock judging, to name a few. Halstead is very much looking forward to the tug of war this



year, after both our boys' and girls' teams performed amazingly at last year's show. Our boys came 1st and our girls finished 3rd. After months of hard training, we're hoping for another fantastic result this year.

Halstead has also taken part in many fundraising activities this year for our chosen charity, YANA, which supports mental health within agriculture and rural communities. We began our fundraising with the annual carol singing around local pubs, followed by a Christmas tree collection, raising £1,161.50 from 136 trees collected locally. More recently, we hosted a Six Nations rugby screening on a big screen after the point-to-point. It was an amazing afternoon, with drinks flowing and a BBQ, and proved to be a huge



success - we raised a fantastic amount of money.

Halstead, along with one of our own members, Will Honeywood, as Show Chairman, has put in a great deal of hard work and come up with fantastic ideas to ensure Show day is a brilliant day for everyone. We are incredibly proud to be part of Essex Young Farmers and are all looking forward to the big day, each doing our bit to help.

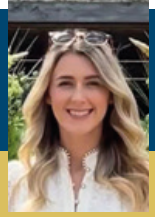
Halstead meets weekly on Monday evenings, and we currently have around 50 members. We'd love to welcome new faces, so if you're interested in joining us, please get in touch. You can find our weekly programme and stay up to date with everything we're doing on our Facebook and Instagram pages.

Lauren x





CLUB REPORT: MALDON



REPORT: KATIE GOFF • CHAIR: LUCY STAMMERS (07566 258293)
SECRETARY: SIAN DIXON (07932 992089) • @MALDONIFYC

Hello everyone and welcome to the Essex Young Farmers Show 2026 – gosh, how it's come round quick again!

Maldon Young Farmers have been mighty busy since the last show and all thanks to our Club Chairwoman Lucy Stammers, the Club has continued to go from strength to strength. It may be the time to add that we are now the biggest Club in the County, which is not from sheer luck, it really is a great Club to be a part of!

A quick summary of the past year... hold tight, there's a lot to squeeze in here!

On the fundraising front, we started the new Young Farmer year with a bang by hosting our annual Fireworks display. It was amazing to see so much public support and familiar faces from previous years, and we were delighted to raise an incredible amount of money for our chosen Charity this year, Florentinas Footsteps Foundation. Heading into the festive period, we held a successful Christmas Tree selling day and collection service in January followed by our annual Big Fat Quiz of the year. But it didn't stop there... back by popular demand for a second year was our Easter Tractor run, which once again received a fantastic reception from the public. And finally, and most recently, we organised our annual Charity Clay Shoot at Braxted Park.

Our weekly meets are always varied with talks and tours covering every corner of the members' interests. From the equestrian world with talks from The Thoroughbred Breeding Association and touring around Paton and Lee, to farming insights with FCN and many visits around local farms



such as Boydell's Farm. We also have had interactive tours around our local fire station, Maldon Oysters Company and a behind the scenes visit at The Blackwater Brewing Company, learning about the brewing process from grain to glass. There really is something for everyone!

But we're not all about learning... We also make sure to pack in as many activities as we can. From axe throwing and laser tag to barn dancing and our very own Apprentice inspired evening. And of course, no meet would be complete without finishing at a local pub for a well earned social.

Maldon have also participated in a number of competitions this year from Hockey, Stock Judging and Public Speaking to Dodgeball - which we qualified for Eastern Areas and came second overall at! Our Chair Lucy also qualified for the Eastern Area competitions for Member of the Year and came a close second. We have also been training hard since January, through the mud and what felt like never ending rain, for Tug of War. Our boots are sharpened ready to take on the challenge again. Please do cheer us along on the sidelines today and keep your eyes peeled to

see if Maldon can retain a victory for another year.

As we move into June and as the 'Young Farmers' Calendar starts to wind down ahead of harvest, we are excited to be hosting a ball to wrap up the season - this year with a circus theme, so expect plenty of colour, costumes and maybe a few surprises. Keep an eye out on our socials for some behind the scenes magic on the build-up!

Before I finish, I just wanted to say a big thank you to all of our Subscribers for their ongoing support year on year and a special mention to Heidi Golding, Chris Wood and our Club President Tad Tallowin for their hands-on involvement and always being at the other end of the phone when needed.

If you are interested in joining our Club, please reach out to us via our social media. We meet every Tuesday evening and have plenty of other socials and additional activities on various other days during the week too!

That's all from me! I hope you have an enjoyable day out at our Show!

Katie x



CLUB REPORT: ONGAR



REPORT: ALBERT HOLLAND • CHAIR: LUCY WEBSTER (07587 170669)
SECRETARY: HANNAH GILES (07379 993460) / ELLIE BULL (07787 558416) • @ONGARYOUNGFARMERSCLUB



Hello everyone, and thanks for coming along to our Essex Young Farmers Show.

I can see from the other club reports that you are probably tired of reading by this point, so I thought the best way to showcase our amazing club is through the photos that surround the page.



You can clearly see that we have an amazing time no matter what we are doing! If it is a tour, pub social, party, ball or trip, we are always laughing and making lifelong memories.



If you are looking for a genuine group of people to make lifelong mates, memories and stories to tell, come along on a Tuesday night to one of our meets.



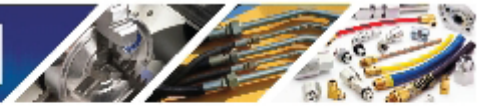
You can find out what we have done, and what we are planning to do on our Instagram - @ongaryoungfarmersclub

Come along and see what you think, see you soon.

Albert



WICKHAM



Engineering, Hose & Hydraulics Ltd

One stop solution for all your Industrial, Engineering and Hose and Hydraulics requirements.

Specialists in hydraulic hose assemblies to your specification. Our services include engineering, rams and cylinders, installations, line boring and much more.

We supply, design & build to suit your requirements from compressors & pipework to platforms & walkways.

Visit our online shop where you will find an extensive range of stock. www.wickhamengineeringltd.co.uk

Call us on 01621 868848

Enquiries@wickhamengineering.com

Taylor's

JAGUAR



AUTHORISED SERVICE & REPAIRS |
MOT | TYRES | VISUAL HEALTH CHECK



WWW.TAYLORSCENTRES.CO.UK

01371 290062



westpoint farm vets

100% Farm Vets

chelmsford@westpointfarmvets.co.uk | westpointfarmvets.co.uk



Allied teams: dedicated farm animal veterinary surgeons offering vet tech services and access to consultants with further qualifications.

Catering to all livestock: commercial, smallholdings and companion farm animals. Health planning, preventative medicine and emergency care **24/7**.

Laboratory and Outpatient Clinic: for emergencies, fertility, dental work, radiography, surgery and fast turnaround diagnostics.

Tailored Pricing Plans: save on fees, medicines, and more with our flock and beef clubs, smallholder saver scheme and bespoke commercial plans.

Unit 1, The Old Coal Yard, Chelmsford CM1 7TG

01306 628 489

vetPartners



[westpointfarmvets](https://www.instagram.com/westpointfarmvets)



[/westpointfarmvets](https://www.facebook.com/westpointfarmvets)



CLUB REPORT: SOUTHMINSTER



REPORT: MARLI WOOD • CHAIR: CALLUM WYATT (07810 526569)
SECRETARY: KATIE FULLER (07976 597017) • @ @SOUTHMINSTERYFC

Hello all!

With longer, brighter days ahead, there's no better time to get outdoors and make the most of the sun - and that's exactly what we do at Southminster Young Farmers!

We're a small, welcoming club - perfect if you're looking to join a friendly, supportive, and down-to-earth group of like-minded young people between 16 and 28. With around 20 members, we're a close-knit bunch who enjoy everything from relaxed socials to action-packed activities.

Our Tuesday meet-ups can include anything from summer beach trips and canoeing, to Ninja Warrior challenges, or even a bit of horse riding - always involving a fair amount of chaos! And it doesn't stop there - we also organise plenty of extra socials, from karaoke nights to Sunday dog walks. And we love a party! Balls, parties, harvest suppers - you name it, we'll be there! Between dancing, drinking (in moderation, of course!), and unforgettable memories, you can always enjoy the night in a safe and supportive environment.



If this sounds like your kind of thing, we'd love to hear from you. We regularly host new members' evenings which are a great way to get started, or you can come along to any of our socials where you will be welcomed with open arms.

To find out more, contact our Club Chairman Callum (07853930534) or get in touch via Instagram (@southminsteryfc) or Facebook (Southminster Young Farmers).

Enjoy the Essex Young Farmers' Show, and we hope to see you soon!



In true Essex Young Farmers' fashion, community is at the heart of what we do. Whether it's helping with charity events, organising joint socials with other clubs, taking part in tractor runs, or supporting each other at work events hosted by our members' businesses, there's always something to get involved in.

Remember: you don't have to be a farmer to be a Young Farmer! Our club celebrates all sorts of professions from healthcare to the arts and everything in between - we don't all drive tractors, although we greatly appreciate those that do.

Marli



ESSEX YOUNG FARMERS



'You don't have to be a farmer to be a Young Farmer'

Essex Young Farmers is made up of 10 clubs across Essex with members aged 16-28. Clubs meet every week and take part in a variety of activities!



There are lots of inter-club competitions, from tug of war to hockey, lawn mower racing and public speaking - something for everyone!



Every club runs fundraising events for their chosen charities throughout the year, host parties, balls - plenty of social events!

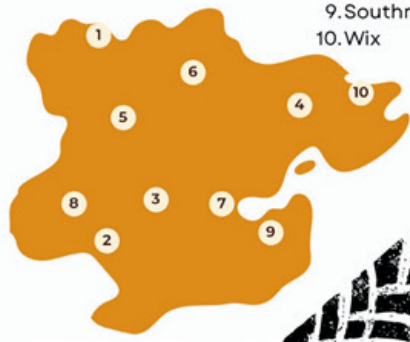


Young Farmers opens many doors; learn new skills, meet new people, enhance your career, or travel the world!



Join a club near you!

1. Ashdon & Saffron Walden
2. Brentwood
3. Chelmsford
4. Colchester
5. Dunmow
6. Halstead
7. Maldon
8. Ongar
9. Southminster
10. Wix





CLUB REPORT: WIX



REPORT: JESS PALMER • CHAIR: IMOGEN OSBORNE (07526 915324)
SECRETARY: KALYIA DEWING (07792 666016) • @WIXYFC

Wix Young Farmers is a friendly, active club offering a fantastic range of opportunities for young people to get involved, learn new skills, make friends, and be part of the local community.

It has already been a busy and exciting few months for our members, who have taken part in a wide variety of visits, competitions, and social events. We started the year with an informative talk from Clacton RNLI, giving members a valuable insight into the vital lifesaving work carried out by its dedicated volunteers. We also visited the Tendring Specialist Stroke Clinic, one of our chosen charities this year, where members learned more about the important care and rehabilitation services provided to patients and their families.

As the evenings have become lighter, we've enjoyed getting back out onto local farms, including our much-loved annual lambing visit. This hands-on experience gave members the chance to meet and feed this year's lambs while learning more about sheep farming and livestock care.

Competitions are a big part of Young Farmers, and Wix has continued to show great enthusiasm and team spirit. Public speaking kicked off the competition season, with members taking part across all



categories and achieving a fantastic 3rd place in Braintrust. Our efforts were recognised at county level, where Wix was named "Club of the Month" for throwing ourselves wholeheartedly into the competition.

February brought even more opportunities to get involved, with both Farm Evaluation and Tug of War. It was especially great to see Wix field both a boys' and girls' team for Tug of War for the first time in many years, with lots of new members stepping forward to take part. Many of these members also got involved in Farm Evaluation, putting their practical knowledge and teamwork skills to the test.

Our members also play an active role in supporting the wider community. Following the Golden Welly Ball, members swapped their dancing shoes for wellies and helped plant native hedges at the Tendring

Showground. This initiative supported local conservation efforts, and funding from the Tendring Hundred Farmers Club has helped provide new Tug of War boots for our teams.

Looking ahead, we have an exciting calendar planned, including our upcoming Summer Soirée at a beautiful local vineyard, as well as more trips and visits such as a planned tour of Essex & Herts Air Ambulance. There is always something to look forward to at Wix Young Farmers.

We meet regularly for a mix of social evenings, talks, and activities, usually at either The Haywain or The Crowne in Thorpe-le-Soken. Whether you're interested in farming, competitions, socialising, or just trying something new, there is something for everyone.

Wix Young Farmers is proud to be a welcoming and supportive club, offering members the chance to build confidence, develop new skills, and create lasting friendships while giving back to the community.

Interested in joining? We are always keen to welcome new members. For more information, check out our Instagram @WixYFC

Jess





CHAPLAIN'S CHAPTER

REVD CANON JANET NICHOLLS

Thank you for coming along to the 2026 Essex Young Farmers' Show. If this is your first visit to the Show, I hope you enjoy it and will return in the future. Many of us return year after year (for decades in my case!).

In writing this piece, I had rather a nostalgic look back on my own Young Farmers' Show history, starting with the fun of participating as a Dunmow Young Farmer member. Another highlight was returning with my young children who sought every opportunity to sit in the cabs of shiny new pieces of agricultural machinery. I now have the great pleasure of seeing my grandchildren enjoying the Show! And the icing on the cake has been the privilege of being here as Agricultural Chaplain for the last eleven years.

To the credit of Essex Young Farmers, I realise that each "season" has held something distinct and special for me. It is quite incredible that an annual event can keep on appealing year after year. Each committee's

"It is quite incredible that an annual event can keep on appealing year after year. Each committee's new ideas bring a freshness whilst never losing the much-loved constants which characterise the Young Farmers Show"

new ideas bring a freshness whilst never losing the much-loved constants which characterise the Young Farmers Show. In a volatile, unpredictable world, many people are finding comfort and strength in the things that remain constant in life. Thank you Essex Young Farmers for providing such a brilliant mid-year "constant" for us all!

One of the delights of today is meeting up with many farmers treating themselves to a day off. When food production is so challenging, a good catch up with friends is even more important. The words of the Farmers' Toast popularised by *The Fisherman's Friends* have often sprung to mind lately:

*Were it not for my seeding you'd all have poor feeding,
I'm sure you would all starve without me;*

*But I am content when I've just paid the rent,
I'm happy when friends are around me.*

So, I hope you have a great day, make good memories to take home with you, catch up with friends and of course, please stop me for a chat! And as always, please take God's gentle constant assurances with you too...

*May the love, peace and blessing of God be with you,
this day and always*

Janet

Revd Canon Janet Nicholls
Agricultural Chaplain, Diocese of Chelmsford
jnicholls@chelmsford.anglican.org

**Lambert
Chapman**
Chartered Accountants

EXPERTS IN YOUR FIELD

Delivering specialist accountancy solutions to the agricultural sector

Proudly supporting the Essex Young Farmers.
Have a great show!

CALL CRAIG WEAVERS - 01376 326 266
www.lambert-chapman.co.uk



GEPP
SOLICITORS

“Clear, Practical Legal Advice for You, Your Family & Your Business”

FOR YOU

- Wills, Trusts & Estate Planning
- Tax Planning
- Probate
- Family Law
- Residential Conveyancing
- Dispute Resolution
- Employment
- Motoring Law
- Criminal Law

“ Excellent throughout, very thorough and professional. I will happily use them again. ”



FOR BUSINESS

- Agriculture & Estates
- Commercial Property
- Regulatory Law
- Dispute Resolution
- Employment
- Intellectual Property



Speak to our team today...

5 Springfield Lyons Approach,
Springfield, Chelmsford,
Essex, CM2 5LB

www.geppsolicitors.co.uk
mail@gepp.co.uk
01245 493 939





FOR THE BEST IN...

NEW & USED AGRICULTURAL, CONSTRUCTION, VITICULTURE AND GROUNDCARE MACHINERY

ALWAYS A LARGE SELECTION OF USED MACHINERY IN STOCK:
Check out our website used.ernestdoe.com for a full list of used machinery in stock now.



TRACTOR HIRE

- Short and long term hire
 - Competitive rates
 - 20-350hp
 - All tractors under 12 months old
- For hire rates and availability, please contact Will Young 01245 383567



GROUNDCARE

For all your ground maintenance machinery, from the smallest domestic mower to commercial turf care machinery, we have it all. Contact your local branch for details

We also stock a wide range of country clothing and footwear from all the leading brands. We're online too: shop.ernestdoe.com



- Fyfield, Ongar 01277 899464 • Colchester 01206 871881 • Rochford 01702 544562
- Ulting, Maldon 01245 380311